

Product datasheet for **TA344724**

RRAGD Rabbit Polyclonal Antibody

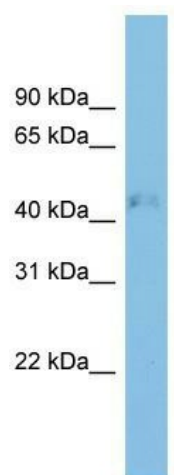
Product data:

Product Type:	Primary Antibodies
Applications:	WB
Recommended Dilution:	WB
Reactivity:	Human
Host:	Rabbit
Isotype:	IgG
Clonality:	Polyclonal
Immunogen:	The immunogen for anti-RRAGD antibody: synthetic peptide directed towards the middle region of human RRAGD. Synthetic peptide located within the following region: CDMIDVVIDISCIYGLKEDGAGTPYDKESTAIKLNNTTVLYLKEVTKFL
Formulation:	Liquid. Purified antibody supplied in 1x PBS buffer with 0.09% (w/v) sodium azide and 2% sucrose. <i>Note that this product is shipped as lyophilized powder to China customers.</i>
Purification:	Affinity Purified
Conjugation:	Unconjugated
Storage:	Store at -20°C as received.
Stability:	Stable for 12 months from date of receipt.
Predicted Protein Size:	45 kDa
Gene Name:	Ras related GTP binding D
Database Link:	NP_067067 Entrez Gene 58528 Human Q9NQL2
Background:	RRAGD is a monomeric guanine nucleotide-binding protein, or G protein. By binding GTP or GDP, small G proteins act as molecular switches in numerous cell processes and signaling pathways.
Synonyms:	bA11D8.2.1; RAGD
Note:	Immunogen Sequence Homology: Dog: 100%; Pig: 100%; Rat: 100%; Horse: 100%; Human: 100%; Bovine: 100%; Rabbit: 93%; Mouse: 86%; Sheep: 77%; Zebrafish: 77%; Guinea pig: 77%



[View online »](#)

Product images:



WB Suggested Anti-RRAGD Antibody Titration:
0.2-1 ug/ml; ELISA Titer: 1:312500; Positive
Control: A549 cell lysate