

Product datasheet for **TA344723**

PLEKHA1 Rabbit Polyclonal Antibody

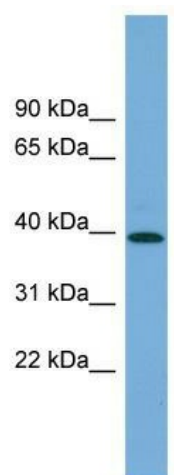
Product data:

Product Type:	Primary Antibodies
Applications:	WB
Recommended Dilution:	WB
Reactivity:	Human
Host:	Rabbit
Isotype:	IgG
Clonality:	Polyclonal
Immunogen:	The immunogen for anti-PLEKHA1 antibody: synthetic peptide directed towards the N terminal of human PLEKHA1. Synthetic peptide located within the following region: LNKAIKITVPKQSDSQPNSDNLSRHGECGKKQVSYRTDIVGGVPIITPTQ
Formulation:	Liquid. Purified antibody supplied in 1x PBS buffer with 0.09% (w/v) sodium azide and 2% sucrose. <i>Note that this product is shipped as lyophilized powder to China customers.</i>
Purification:	Affinity Purified
Conjugation:	Unconjugated
Storage:	Store at -20°C as received.
Stability:	Stable for 12 months from date of receipt.
Predicted Protein Size:	45 kDa
Gene Name:	pleckstrin homology domain containing A1
Database Link:	NP_067635 Entrez Gene 59338 Human Q9HB21
Background:	PLEKHA1 binds specifically to phosphatidylinositol-3,4-diphosphate (PtdIns3,4P2), but not to other phosphoinositides. PLEKHA1 may recruit other proteins to the plasma membrane.
Synonyms:	TAPP1
Note:	Immunogen Sequence Homology: Rat: 100%; Human: 100%; Dog: 93%; Horse: 93%; Pig: 92%; Rabbit: 92%; Guinea pig: 92%; Mouse: 86%



[View online »](#)

Product images:



WB Suggested Anti-PLEKHA1 Antibody Titration:
0.2-1 ug/ml; Positive Control: Human Lung