

Product datasheet for **TA344719**

MMP26 Rabbit Polyclonal Antibody

Product data:

Product Type:	Primary Antibodies
Applications:	WB
Recommended Dilution:	WB
Reactivity:	Human
Host:	Rabbit
Isotype:	IgG
Clonality:	Polyclonal
Immunogen:	The immunogen for anti-MMP26 antibody: synthetic peptide directed towards the C terminal of human MMP26. Synthetic peptide located within the following region: NLFLVATHEIGHSLGLQHSGNQSSIMYPTYWYHDPRTFQLSADDIQRIGH
Formulation:	Liquid. Purified antibody supplied in 1x PBS buffer with 0.09% (w/v) sodium azide and 2% sucrose. <i>Note that this product is shipped as lyophilized powder to China customers.</i>
Purification:	Affinity Purified
Conjugation:	Unconjugated
Storage:	Store at -20°C as received.
Stability:	Stable for 12 months from date of receipt.
Predicted Protein Size:	19 kDa
Gene Name:	matrix metalloproteinase 26
Database Link:	NP_068573 Entrez Gene 56547 Human Q9NRE1



[View online »](#)

Background:

Proteins of the matrix metalloproteinase (MMP) family are involved in the breakdown of extracellular matrix in normal physiological processes, such as embryonic development, reproduction, and tissue remodeling, as well as in disease processes, such as arthritis and metastasis. Most MMP's are secreted as inactive proproteins which are activated when cleaved by extracellular proteinases. The encoded protein degrades type IV collagen, fibronectin, fibrinogen, casein, vitronectin, alpha 1-antitrypsin, alpha 2-macroglobulin, and insulin-like growth factor-binding protein 1, and activates MMP9 by cleavage. The protein differs from most MMP family members in that it lacks a conserved C-terminal protein domain.

Synonyms:

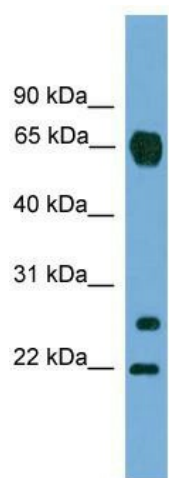
MGC126590; MGC126592

Note:

Immunogen Sequence Homology: Human: 100%; Rat: 83%

Protein Families:

Druggable Genome, Secreted Protein

Product images:

WB Suggested Anti-MMP26 Antibody Titration: 0.2-1 ug/ml; ELISA Titer: 1:1562500; Positive Control: A549 cell lysate MMP26 is supported by BioGPS gene expression data to be expressed in A549