

## Product datasheet for **TA344718**

### HAPLN2 Rabbit Polyclonal Antibody

#### Product data:

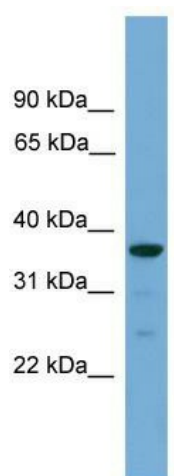
Product Type:	Primary Antibodies
Applications:	WB
Recommended Dilution:	WB
Reactivity:	Human
Host:	Rabbit
Isotype:	IgG
Clonality:	Polyclonal
Immunogen:	The immunogen for anti-HAPLN2 antibody: synthetic peptide directed towards the middle region of human HAPLN2. Synthetic peptide located within the following region: LDQCDGGWLADGSVRFITTPRPRCGGLPDPGVRSFGFPRPQQAAYGTYC
Formulation:	Liquid. Purified antibody supplied in 1x PBS buffer with 0.09% (w/v) sodium azide and 2% sucrose.
Purification:	Affinity Purified
Conjugation:	Unconjugated
Storage:	Store at -20°C as received.
Stability:	Stable for 12 months from date of receipt.
Predicted Protein Size:	38 kDa
Gene Name:	hyaluronan and proteoglycan link protein 2
Database Link:	<a href="#">NP_068589</a> <a href="#">Entrez Gene 60484 Human</a> <a href="#">Q9GZV7</a>
Background:	HAPLN2 mediates a firm binding of versican V2 to hyaluronic acid. HAPLN2 may play a pivotal role in the formation of the hyaluronan-associated matrix in the central nervous system (CNS) which facilitates neuronal conduction and general structural stabilization. HAPLN2 binds to hyaluronic acid.
Synonyms:	BRAL1
Note:	Immunogen Sequence Homology: Dog: 100%; Pig: 100%; Rat: 100%; Horse: 100%; Human: 100%; Mouse: 100%; Bovine: 100%; Guinea pig: 100%; Zebrafish: 77%



[View online »](#)

Protein Families: Secreted Protein

### Product images:



WB Suggested Anti-HAPLN2 Antibody Titration:  
0.2-1 ug/ml; ELISA Titer: 1:1562500; Positive  
Control: THP-1 cell lysate