

## Product datasheet for **TA344716**

### Translation factor GUF1, mitochondrial (GUF1) Rabbit Polyclonal Antibody

#### Product data:

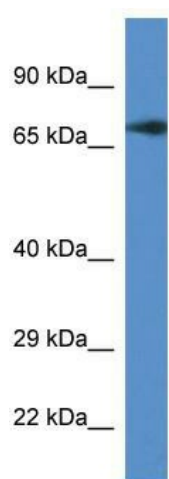
|                         |  |
|-------------------------|--|
| Product Type:           | Primary Antibodies   |
| Applications:           | WB   |
| Recommended Dilution:   | WB   |
| Reactivity:             | Mouse  |
| Host:                   | Rabbit   |
| Isotype:                | IgG  |
| Clonality:              | Polyclonal   |
| Immunogen:              | The immunogen for anti-Guf1 antibody: synthetic peptide corresponding to a region of Mouse. Synthetic peptide located within the following region:<br>YLFPLNEIVDFYDSLKSLSSGYASFDYEDAGYQTAELVKMDILLNGNMV  |
| Formulation:            | Liquid. Purified antibody supplied in 1x PBS buffer with 0.09% (w/v) sodium azide and 2% sucrose.<br><i>Note that this product is shipped as lyophilized powder to China customers.</i>  |
| Purification:           | Affinity Purified  |
| Conjugation:            | Unconjugated   |
| Storage:                | Store at -20°C as received.  |
| Stability:              | Stable for 12 months from date of receipt.   |
| Predicted Protein Size: | 72 kDa   |
| Gene Name:              | GUF1 homolog, GTPase   |
| Database Link:          | <a href="#">NP_068746</a><br><a href="#">Entrez Gene 231279 Mouse</a><br><a href="#">Q8N442</a>  |
| Background:             | Guf1 promotes mitochondrial protein synthesis. It may act as a fidelity factor of the translation reaction, by catalyzing a one-codon backward translocation of tRNAs on improperly translocated ribosomes. It binds to mitochondrial ribosomes in a GTP-dependent manner. |
| Synonyms:               | EF-4; EF4; EIEE40  |



[View online »](#)

**Note:** Immunogen Sequence Homology: Dog: 100%; Pig: 100%; Rat: 100%; Human: 100%; Mouse: 100%; Bovine: 100%; Guinea pig: 100%; Horse: 93%; Rabbit: 93%; Yeast: 90%; Zebrafish: 79%

### Product images:



WB Suggested Anti-Guf1 Antibody; Titration: 1.0 ug/ml; Positive Control: Mouse Brain