

Product datasheet for **TA344714**

Serine racemase (SRR) Rabbit Polyclonal Antibody

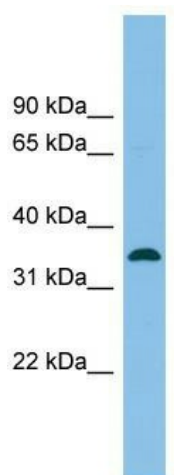
Product data:

Product Type:	Primary Antibodies
Applications:	WB
Recommended Dilution:	WB
Reactivity:	Human
Host:	Rabbit
Isotype:	IgG
Clonality:	Polyclonal
Immunogen:	The immunogen for anti-SRR antibody: synthetic peptide directed towards the middle region of human SRR. Synthetic peptide located within the following region: GVGVAAVLSQHFQTVSPEVKNICIVLSGGNVDLTSSITWVKQAERPASYQ
Formulation:	Liquid. Purified antibody supplied in 1x PBS buffer with 0.09% (w/v) sodium azide and 2% sucrose. <i>Note that this product is shipped as lyophilized powder to China customers.</i>
Purification:	Affinity Purified
Conjugation:	Unconjugated
Storage:	Store at -20°C as received.
Stability:	Stable for 12 months from date of receipt.
Predicted Protein Size:	36 kDa
Gene Name:	serine racemase
Database Link:	NP_068766 Entrez Gene 63826 Human Q9GZT4
Background:	SRR catalyzes the synthesis of D-serine from L-serine.
Synonyms:	ILV1; ISO1
Note:	Immunogen Sequence Homology: Dog: 100%; Rat: 100%; Human: 100%; Mouse: 100%; Rabbit: 100%; Horse: 93%; Bovine: 79%
Protein Pathways:	Glycine, serine and threonine metabolism



[View online »](#)

Product images:



WB Suggested Anti-SRR Antibody Titration: 0.2-1 ug/ml; ELISA Titer: 1:1562500; Positive Control: HCT15 cell lysate