

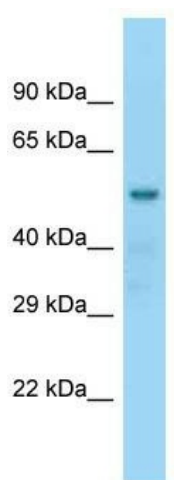
Product datasheet for TA344713

NAP1L2 Rabbit Polyclonal Antibody

Product data:

Product Type:	Primary Antibodies
Applications:	WB
Recommended Dilution:	WB
Reactivity:	Mouse
Host:	Rabbit
Isotype:	IgG
Clonality:	Polyclonal
Immunogen:	The immunogen for Anti-Nap1l2 antibody is: synthetic peptide directed towards the N-terminal region of Nap1l2. Synthetic peptide located within the following region: QTRAAHLESKFLREFHDIERKFAEMYQPLLEKRRQIINAVYEPTEECEY
Formulation:	Liquid. Purified antibody supplied in 1x PBS buffer with 0.09% (w/v) sodium azide and 2% sucrose.
Purification:	Affinity Purified
Conjugation:	Unconjugated
Storage:	Store at -20°C as received.
Stability:	Stable for 12 months from date of receipt.
Predicted Protein Size:	51 kDa
Gene Name:	nucleosome assembly protein 1 like 2
Database Link:	NP_068798 Entrez Gene 17954 Mouse Q9ULW6
Background:	Nap1l2 is a acidic protein which may be involved in interactions with other proteins or DNA.
Synonyms:	BPX
Note:	Immunogen Sequence Homology: Rat: 100%; Horse: 100%; Human: 100%; Mouse: 100%; Rabbit: 100%; Pig: 93%; Dog: 86%


[View online »](#)

Product images:

WB Suggested Anti-Nap1l2 Antibody; Titration:
1.0 ug/ml; Positive Control: Mouse Kidney