

Product datasheet for TA344712

NAP1L2 Rabbit Polyclonal Antibody

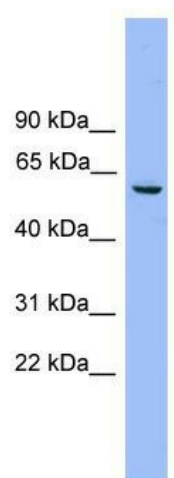
Product data:

Product Type:	Primary Antibodies
Applications:	WB
Recommended Dilution:	WB
Reactivity:	Human
Host:	Rabbit
Isotype:	IgG
Clonality:	Polyclonal
Immunogen:	The immunogen for anti-NAP1L2 antibody: synthetic peptide directed towards the middle region of human NAP1L2. Synthetic peptide located within the following region: VDTLTPLIKKYDEPILKLLTDIKVKLSDPGEPLSFTLEFHFKNPNEYFKNE
Formulation:	Liquid. Purified antibody supplied in 1x PBS buffer with 0.09% (w/v) sodium azide and 2% sucrose. <i>Note that this product is shipped as lyophilized powder to China customers.</i>
Purification:	Affinity Purified
Conjugation:	Unconjugated
Storage:	Store at -20°C as received.
Stability:	Stable for 12 months from date of receipt.
Predicted Protein Size:	52 kDa
Gene Name:	nucleosome assembly protein 1 like 2
Database Link:	NP_068798 Entrez Gene 4674 Human Q9ULW6
Background:	This gene encodes a member of the nucleosome assembly protein (NAP) family. The function of this family member is unknown; however, mouse studies suggest that it represents a class of tissue-specific factors interacting with chromatin to regulate neuronal cell proliferation.
Synonyms:	BPX
Note:	Immunogen Sequence Homology: Dog: 100%; Pig: 100%; Rat: 100%; Horse: 100%; Human: 100%; Mouse: 100%; Rabbit: 100%; Zebrafish: 86%; Bovine: 85%; Guinea pig: 85%



[View online »](#)

Product images:



WB Suggested Anti-NAP1L2 Antibody Titration:
0.2-1 ug/ml; Positive Control: HepG2 cell lysate