

Product datasheet for **TA344711**

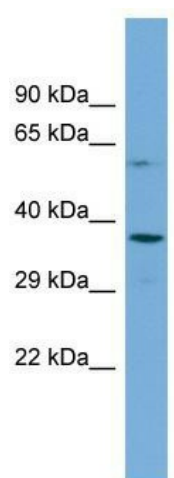
SHFM3 (FBXW4) Rabbit Polyclonal Antibody

Product data:

| | |
|-------------------------|--|
| Product Type: | Primary Antibodies |
| Applications: | WB |
| Recommended Dilution: | WB |
| Reactivity: | Human |
| Host: | Rabbit |
| Isotype: | IgG |
| Clonality: | Polyclonal |
| Immunogen: | The immunogen for Anti-FBXW4 antibody is: synthetic peptide directed towards the N-terminal region of Human FBXW4. Synthetic peptide located within the following region: RQMPWMQLEDDSLYISQANFILAYQFRPDGASLNRRPLGVFAGHDEDVCH |
| Formulation: | Liquid. Purified antibody supplied in 1x PBS buffer with 0.09% (w/v) sodium azide and 2% sucrose. |
| Purification: | Affinity Purified |
| Conjugation: | Unconjugated |
| Storage: | Store at -20°C as received. |
| Stability: | Stable for 12 months from date of receipt. |
| Predicted Protein Size: | 35 kDa |
| Gene Name: | F-box and WD repeat domain containing 4 |
| Database Link: | NP_071322 Entrez Gene 6468 Human P57775 |
| Background: | The function of this protein remains unknown. |
| Synonyms: | DAC; FBW4; FBWD4; SHFM3; SHSF3 |
| Note: | Immunogen Sequence Homology: Pig: 100%; Rat: 100%; Horse: 100%; Human: 100%; Mouse: 100%; Bovine: 100%; Rabbit: 100%; Guinea pig: 100%; Dog: 93% |
| Protein Families: | Druggable Genome |


[View online »](#)

Product images:



Host: Rabbit; Target Name: FBXW4; Sample
Tissue: THP-1 Whole Cell lysates; Antibody
Dilution: 1.0 ug/ml