

Product datasheet for **TA344708**

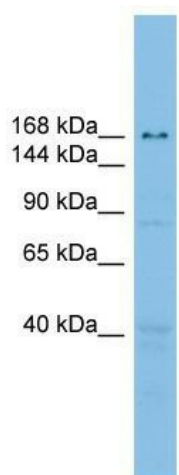
E2 230K (UBE2O) Rabbit Polyclonal Antibody

Product data:

Product Type:	Primary Antibodies
Applications:	WB
Recommended Dilution:	WB
Reactivity:	Human
Host:	Rabbit
Isotype:	IgG
Clonality:	Polyclonal
Immunogen:	The immunogen for anti-UBE2O antibody: synthetic peptide directed towards the middle region of human UBE2O. Synthetic peptide located within the following region: YNEAGFSDRGLQEGYENSRCYNEMALIRVVQSMTQLVRRPPEVFEQEIR
Formulation:	Liquid. Purified antibody supplied in 1x PBS buffer with 0.09% (w/v) sodium azide and 2% sucrose. <i>Note that this product is shipped as lyophilized powder to China customers.</i>
Purification:	Affinity Purified
Conjugation:	Unconjugated
Storage:	Store at -20°C as received.
Stability:	Stable for 12 months from date of receipt.
Predicted Protein Size:	141 kDa
Gene Name:	ubiquitin conjugating enzyme E2 O
Database Link:	NP_071349 Entrez Gene 63893 Human Q9C0C9
Background:	UBE2O catalyzes the covalent attachment of ubiquitin to other proteins.
Synonyms:	E2-230K
Note:	Immunogen Sequence Homology: Dog: 100%; Pig: 100%; Rat: 100%; Horse: 100%; Human: 100%; Mouse: 100%; Bovine: 100%; Rabbit: 100%; Guinea pig: 100%
Protein Pathways:	Ubiquitin mediated proteolysis



[View online »](#)

Product images:

WB Suggested Anti-UBE2O Antibody Titration:
0.2-1 ug/ml; ELISA Titer: 1:62500; Positive Control:
RPMI 8226 cell lysate UBE2O is supported by
BioGPS gene expression data to be expressed in
RPMI 8226