

Product datasheet for **TA344707**

Vipas39 Rabbit Polyclonal Antibody

Product data:

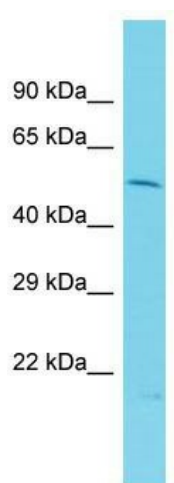
Product Type:	Primary Antibodies
Applications:	WB
Recommended Dilution:	WB
Reactivity:	Rat
Host:	Rabbit
Isotype:	IgG
Clonality:	Polyclonal
Immunogen:	The immunogen for Anti-LOC681989 antibody is: synthetic peptide directed towards the middle region of Rat LOC681989. Synthetic peptide located within the following region: PPSTYLSSSFRRGRTRPGSFQSLSDALSDTPAKTYSPELGRPKEGYRDYS
Formulation:	Liquid. Purified antibody supplied in 1x PBS buffer with 0.09% (w/v) sodium azide and 2% sucrose. <i>Note that this product is shipped as lyophilized powder to China customers.</i>
Purification:	Affinity Purified
Conjugation:	Unconjugated
Storage:	Store at -20°C as received.
Stability:	Stable for 12 months from date of receipt.
Predicted Protein Size:	50 kDa
Gene Name:	VPS33B interacting protein, apical-basolateral polarity regulator, spe-39 homolog
Database Link:	NP_001094474 Entrez Gene 681989 Rat Q5PQN6
Background:	LOC681989 plays a role in lysosomal trafficking, probably via association with the core HOPS complex in a discrete population of endosomes. It may play a role in epithelial polarization through stabilization of apical membrane protein content, possibly via the RAB11A-dependent apical recycling pathway. It is also involved in direct or indirect transcriptional regulation of E-cadherin and may play a role in vesicular trafficking during spermatogenesis.
Synonyms:	C14orf133; hSPE-39; SPE-39; SPE39; VIPAR; VPS16B



[View online »](#)

Note: Immunogen Sequence Homology: Dog: 100%; Pig: 100%; Rat: 100%; Horse: 100%; Human: 100%; Mouse: 100%; Bovine: 100%; Rabbit: 100%; Guinea pig: 100%

Product images:



Host: Rabbit; Target Name: LOC681989; Sample Tissue: Rat Thymus lysates; Antibody Dilution: 1.0 ug/ml