

Product datasheet for TA344704

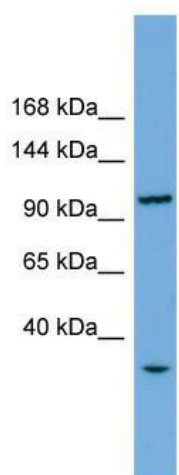
CHTF18 Rabbit Polyclonal Antibody

Product data:

Product Type:	Primary Antibodies
Applications:	WB
Recommended Dilution:	WB
Reactivity:	Human
Host:	Rabbit
Isotype:	IgG
Clonality:	Polyclonal
Immunogen:	The immunogen for anti-CHTF18 antibody: synthetic peptide directed towards the middle region of human CHTF18. Synthetic peptide located within the following region: QALLLDALCLLLDILAPKLRPVSTQLYSTREKQQLASLVGTMLAYSLTYR
Formulation:	Liquid. Purified antibody supplied in 1x PBS buffer with 0.09% (w/v) sodium azide and 2% sucrose.
Purification:	Affinity Purified
Conjugation:	Unconjugated
Storage:	Store at -20°C as received.
Stability:	Stable for 12 months from date of receipt.
Predicted Protein Size:	107 kDa
Gene Name:	chromosome transmission fidelity factor 18
Database Link:	NP_071375 Entrez Gene 63922 Human Q8WVB6
Background:	CHTF18, CHTF8 (MIM 613202), and DCC1 (DSCC1; MIM 613203) are components of an alternative replication factor C (RFC) (see MIM 600404) complex that loads PCNA (MIM 176740) onto DNA during S phase of the cell cycle (Merkle et al., 2003 [PubMed 12766176]; Bermudez et al., 2003 [PubMed 12930902]).
Synonyms:	C16orf41; C321D2.2; C321D2.3; C321D2.4; CHL12; Ctf18; RUVBL
Note:	Immunogen Sequence Homology: Dog: 100%; Pig: 100%; Human: 100%; Mouse: 100%; Rat: 93%; Horse: 93%; Bovine: 93%; Guinea pig: 93%; Zebrafish: 83%


[View online »](#)

Product images:



WB Suggested Anti-CHTF18 Antibody Titration:
0.2-1 ug/ml; ELISA Titer: 1:1562500; Positive
Control: Human Liver