

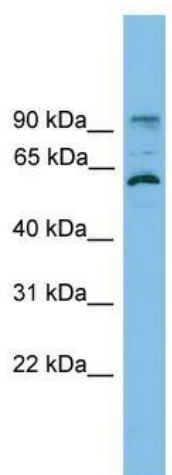
Product datasheet for **TA344702**

ANKRD5 (ANKEF1) Rabbit Polyclonal Antibody

Product data:

Product Type:	Primary Antibodies
Applications:	WB
Recommended Dilution:	WB
Reactivity:	Human
Host:	Rabbit
Isotype:	IgG
Clonality:	Polyclonal
Immunogen:	The immunogen for anti-ANKRD5 antibody: synthetic peptide directed towards the N terminal of human ANKRD5. Synthetic peptide located within the following region: MTIVDNEGKGVLFCILPTKRHYRCALIALEHGADVNNSTYEGKPIFLRA
Formulation:	Liquid. Purified antibody supplied in 1x PBS buffer with 0.09% (w/v) sodium azide and 2% sucrose.
Purification:	Affinity Purified
Conjugation:	Unconjugated
Storage:	Store at -20°C as received.
Stability:	Stable for 12 months from date of receipt.
Predicted Protein Size:	87 kDa
Gene Name:	ankyrin repeat and EF-hand domain containing 1
Database Link:	NP_071379 Entrez Gene 63926 Human Q9NU02
Background:	The function of this protein remains unknown.
Synonyms:	ANKRD5
Note:	Immunogen Sequence Homology: Dog: 100%; Horse: 100%; Human: 100%; Pig: 93%; Rat: 93%; Mouse: 93%; Rabbit: 93%; Guinea pig: 93%; Bovine: 86%


[View online »](#)

Product images:


WB Suggested Anti-ANKRD5 Antibody Titration:
0.2-1 ug/ml; Positive Control: HT1080 cell lysate