

Product datasheet for **TA344700**

XPNPEP3 Rabbit Polyclonal Antibody

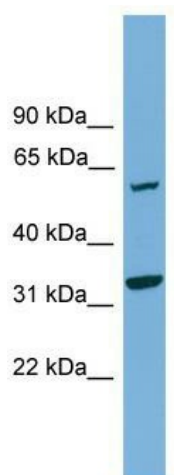
Product data:

Product Type:	Primary Antibodies
Applications:	WB
Recommended Dilution:	WB
Reactivity:	Human
Host:	Rabbit
Isotype:	IgG
Clonality:	Polyclonal
Immunogen:	The immunogen for anti-XPNPEP3 antibody: synthetic peptide directed towards the N terminal of human XPNPEP3. Synthetic peptide located within the following region: PVPERRIPNRYLGQSPFTHPHLLRPGEVTPGLSQVEYALRRHKLMSLIQ
Formulation:	Liquid. Purified antibody supplied in 1x PBS buffer with 0.09% (w/v) sodium azide and 2% sucrose. <i>Note that this product is shipped as lyophilized powder to China customers.</i>
Purification:	Affinity Purified
Conjugation:	Unconjugated
Storage:	Store at -20°C as received.
Stability:	Stable for 12 months from date of receipt.
Predicted Protein Size:	57 kDa
Gene Name:	X-prolyl aminopeptidase 3, mitochondrial
Database Link:	NP_071381 Entrez Gene 63929 Human Q9NQH7
Background:	The function of this protein remains unknown.
Synonyms:	APP3; ICP55; NPHPL1
Note:	Immunogen Sequence Homology: Dog: 100%; Pig: 100%; Rat: 100%; Horse: 100%; Human: 100%; Mouse: 100%; Bovine: 100%; Rabbit: 100%; Guinea pig: 100%; Zebrafish: 79%
Protein Families:	Druggable Genome, Protease



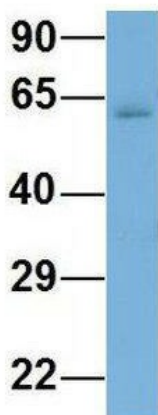
[View online »](#)

Product images:



WB Suggested Anti-XPNPEP3 Antibody Titration: 0.2-1 ug/ml; Positive Control: MCF7 cell lysate

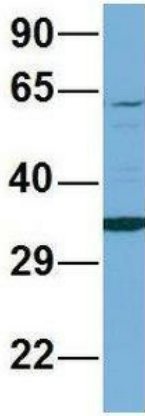
XPNPEP3



Rabbit Anti-XPNPEP3
 Sample Type: Human Adult Placenta
 Antibody Concentration: 1ug/mL

Host: Rabbit; Target Name: XPNPEP3; Sample Tissue: Human Adult Placenta; Antibody Dilution: 1.0 ug/ml

XPNPEP3



Rabbit Anti-XPNPEP3
Sample Type: Human 721_B
Antibody Concentration: 1ug/mL

Host: Rabbit; Target Name: XPNPEP3; Sample Tissue: Human 721_B; Antibody Dilution: 1.0 ug/ml; XPNPEP3 is supported by BioGPS gene expression data to be expressed in 721_B