

## Product datasheet for **TA344698**

### FKBPL Rabbit Polyclonal Antibody

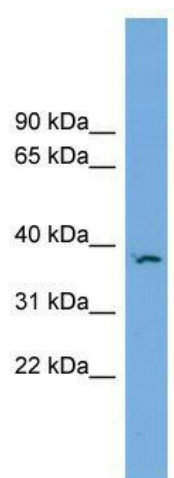
#### Product data:

Product Type:	Primary Antibodies
Applications:	WB
Recommended Dilution:	WB
Reactivity:	Human
Host:	Rabbit
Isotype:	IgG
Clonality:	Polyclonal
Immunogen:	The immunogen for anti-FKBPL antibody: synthetic peptide directed towards the N terminal of human FKBPL. Synthetic peptide located within the following region: AELEGDSHKSHGSTSQMPEALQASDLWYCPDGSFVKKIVIRGHGLDKPKL
Formulation:	Liquid. Purified antibody supplied in 1x PBS buffer with 0.09% (w/v) sodium azide and 2% sucrose. <i>Note that this product is shipped as lyophilized powder to China customers.</i>
Purification:	Affinity Purified
Conjugation:	Unconjugated
Storage:	Store at -20°C as received.
Stability:	Stable for 12 months from date of receipt.
Predicted Protein Size:	38 kDa
Gene Name:	FK506 binding protein like
Database Link:	<a href="#">NP_071393</a> <a href="#">Entrez Gene 63943 Human</a> <a href="#">Q9UIM3</a>
Background:	The protein encoded by this gene has similarity to the immunophilin protein family, which play a role in immunoregulation and basic cellular processes involving protein folding and trafficking. The encoded protein is thought to have a potential role in the induced radioresistance. Also it appears to have some involvement in the control of the cell cycle.
Synonyms:	DIR1; NG7; WISP39
Note:	Immunogen Sequence Homology: Human: 100%



[View online »](#)

## Product images:



WB Suggested Anti-FKBPL Antibody Titration: 0.2-1 ug/ml; ELISA Titer: 1:312500; Positive Control: Human heart