

## Product datasheet for **TA344697**

### Spastin (SPAST) Rabbit Polyclonal Antibody

#### Product data:

Product Type:	Primary Antibodies
Applications:	WB
Recommended Dilution:	WB
Reactivity:	Human
Host:	Rabbit
Isotype:	IgG
Clonality:	Polyclonal
Immunogen:	The immunogen for Anti-SPAST antibody is: synthetic peptide directed towards the middle region of Human SPAST. Synthetic peptide located within the following region: RVLVMGATNRPQELDEAVLRRFIKRVYVSLPNEETRLLLLKNLLCKQGSP
Formulation:	Liquid. Purified antibody supplied in 1x PBS buffer with 0.09% (w/v) sodium azide and 2% sucrose. <i>Note that this product is shipped as lyophilized powder to China customers.</i>
Purification:	Affinity Purified
Conjugation:	Unconjugated
Storage:	Store at -20°C as received.
Stability:	Stable for 12 months from date of receipt.
Predicted Protein Size:	54 kDa
Gene Name:	spastin
Database Link:	<a href="#">NP_955468</a> <a href="#">Entrez Gene 6683 Human</a> <a href="#">Q9UBP0</a>



[View online »](#)

**Background:**

This gene encodes a member of the AAA (ATPases associated with a variety of cellular activities) protein family. Members of this protein family share an ATPase domain and have roles in diverse cellular processes including membrane trafficking, intracellular motility, organelle biogenesis, protein folding, and proteolysis. The encoded ATPase may be involved in the assembly or function of nuclear protein complexes. Two transcript variants encoding distinct isoforms have been identified for this gene. Other alternative splice variants have been described but their full length sequences have not been determined. Mutations associated with this gene cause the most frequent form of autosomal dominant spastic paraplegia 4.

**Synonyms:**

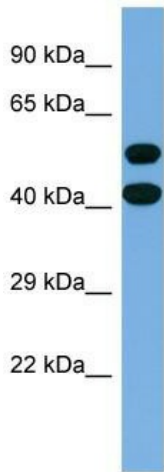
ADPSP; FSP2; SPG4

**Note:**

Immunogen Sequence Homology: Dog: 100%; Pig: 100%; Rat: 100%; Horse: 100%; Human: 100%; Mouse: 100%; Bovine: 100%; Rabbit: 100%; Zebrafish: 100%; Guinea pig: 100%; Goat: 93%

**Protein Families:**

Druggable Genome, Transmembrane

**Product images:**

Host: Rabbit

Target Name: SPAST

Sample Tissue: MCF7 Cell Lysate

Antibody Dilution: 1.0 µg/ml

Host: Rabbit; Target Name: SPAST; Sample Tissue: MCF7 Whole Cell lysates; Antibody Dilution: 1.0 ug/ml; SPAST is supported by BioGPS gene expression data to be expressed in MCF7