

Product datasheet for **TA344696**

PRSS22 Rabbit Polyclonal Antibody

Product data:

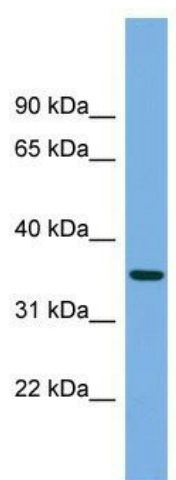
Product Type:	Primary Antibodies
Applications:	WB
Recommended Dilution:	WB
Reactivity:	Human
Host:	Rabbit
Isotype:	IgG
Clonality:	Polyclonal
Immunogen:	The immunogen for anti-PRSS22 antibody: synthetic peptide directed towards the N terminal of human PRSS22. Synthetic peptide located within the following region: IPVPPACGKPKQLNRVVGGEDSTDSEWPWIVSIQKNGTHHCAGSLLTSRW
Formulation:	Liquid. Purified antibody supplied in 1x PBS buffer with 0.09% (w/v) sodium azide and 2% sucrose. <i>Note that this product is shipped as lyophilized powder to China customers.</i>
Purification:	Affinity Purified
Conjugation:	Unconjugated
Storage:	Store at -20°C as received.
Stability:	Stable for 12 months from date of receipt.
Predicted Protein Size:	34 kDa
Gene Name:	protease, serine 22
Database Link:	NP_071402 Entrez Gene 64063 Human Q9GZN4
Background:	This gene encodes a member of the trypsin family of serine proteases. The enzyme is expressed in the airways in a developmentally regulated manner. The gene is part of a cluster of serine protease genes on chromosome 16.
Synonyms:	BSSP-4; hBSSP-4; SP001LA
Note:	Immunogen Sequence Homology: Rat: 100%; Horse: 100%; Human: 100%; Dog: 93%; Pig: 93%; Mouse: 93%; Bovine: 91%; Guinea pig: 86%



[View online »](#)

Protein Families: Druggable Genome, Secreted Protein

Product images:



WB Suggested Anti-PRSS22 Antibody Titration:
0.2-1 ug/ml; ELISA Titer: 1:312500; Positive
Control: HepG2 cell lysate