

Product datasheet for **TA344695**

LHPP Rabbit Polyclonal Antibody

Product data:

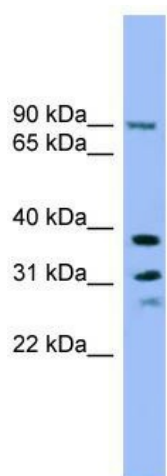
Product Type:	Primary Antibodies
Applications:	WB
Recommended Dilution:	WB
Reactivity:	Human
Host:	Rabbit
Isotype:	IgG
Clonality:	Polyclonal
Immunogen:	The immunogen for anti-LHPP antibody: synthetic peptide directed towards the middle region of human LHPP. Synthetic peptide located within the following region: ACGIKAEVVGKPSPEFFKSALQAIGVEAHQAVMIGDDIVGDVGGGAQRCGM
Formulation:	Liquid. Purified antibody supplied in 1x PBS buffer with 0.09% (w/v) sodium azide and 2% sucrose. <i>Note that this product is shipped as lyophilized powder to China customers.</i>
Purification:	Affinity Purified
Conjugation:	Unconjugated
Storage:	Store at -20°C as received.
Stability:	Stable for 12 months from date of receipt.
Predicted Protein Size:	29 kDa
Gene Name:	phospholysine phosphohistidine inorganic pyrophosphate phosphatase
Database Link:	NP_071409 Entrez Gene 64077 Human Q9H008
Background:	The function of this protein remains unknown.
Synonyms:	HDHD2B
Note:	Immunogen Sequence Homology: Rat: 100%; Human: 100%; Mouse: 100%; Rabbit: 85%; Pig: 83%; Guinea pig: 83%; Horse: 79%; Bovine: 79%
Protein Families:	Druggable Genome



[View online »](#)

Protein Pathways: Oxidative phosphorylation

Product images:



WB Suggested Anti-LHPP Antibody Titration: 0.2-1 ug/ml; ELISA Titer: 1:1562500; Positive Control: A549 cell lysate