

Product datasheet for **TA344694**

LHPP Rabbit Polyclonal Antibody

Product data:

Product Type:	Primary Antibodies
Applications:	WB
Recommended Dilution:	WB
Reactivity:	Mouse
Host:	Rabbit
Isotype:	IgG
Clonality:	Polyclonal
Immunogen:	The immunogen for Anti-Lhpp antibody is: synthetic peptide directed towards the C-terminal region of Lhpp. Synthetic peptide located within the following region: VGDVGGAAQCGMRALQVRTGKFRPGDEHHPEVQADGYVDNLAEAVDLLLK
Formulation:	Liquid. Purified antibody supplied in 1x PBS buffer with 0.09% (w/v) sodium azide and 2% sucrose. <i>Note that this product is shipped as lyophilized powder to China customers.</i>
Purification:	Affinity Purified
Conjugation:	Unconjugated
Storage:	Store at -20°C as received.
Stability:	Stable for 12 months from date of receipt.
Predicted Protein Size:	30 kDa
Gene Name:	phospholysine phosphohistidine inorganic pyrophosphate phosphatase
Database Link:	NP_071409 Entrez Gene 76429 Mouse Q9H008
Background:	Lhpp is a phosphatase that hydrolyzes imidodiphosphate, 3-phosphohistidine and 6-phospholysine. It has broad substrate specificity and can also hydrolyze inorganic diphosphate, but with lower efficiency.
Synonyms:	HDHD2B
Note:	Immunogen Sequence Homology: Pig: 100%; Rat: 100%; Horse: 100%; Human: 100%; Mouse: 100%; Bovine: 100%; Rabbit: 100%; Guinea pig: 100%; Dog: 93%

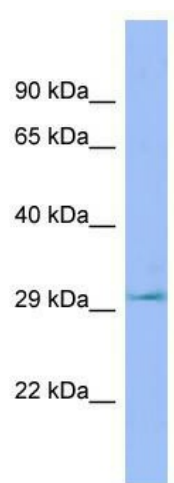


[View online »](#)

Protein Families: Druggable Genome

Protein Pathways: Oxidative phosphorylation

Product images:



WB Suggested Anti-Lhpp Antibody; Titration: 1.0 ug/ml; Positive Control: Mouse Heart