

Product datasheet for **TA344692**

RTP4 Rabbit Polyclonal Antibody

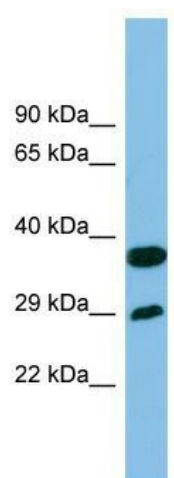
Product data:

Product Type:	Primary Antibodies
Applications:	WB
Recommended Dilution:	WB
Reactivity:	Human
Host:	Rabbit
Isotype:	IgG
Clonality:	Polyclonal
Immunogen:	The immunogen for anti-RTP4 antibody: synthetic peptide directed towards the middle region of human RTP4. Synthetic peptide located within the following region: SSDSTMRILSNLVQHILKKYYGNTRKSPPEMPVILEVSLEGSHTANCEA
Formulation:	Liquid. Purified antibody supplied in 1x PBS buffer with 0.09% (w/v) sodium azide and 2% sucrose. <i>Note that this product is shipped as lyophilized powder to China customers.</i>
Purification:	Affinity Purified
Conjugation:	Unconjugated
Storage:	Store at -20°C as received.
Stability:	Stable for 12 months from date of receipt.
Predicted Protein Size:	28 kDa
Gene Name:	receptor transporter protein 4
Database Link:	NP_071430 Entrez Gene 64108 Human Q96DX8
Background:	The function of this protein remains unknown.
Synonyms:	IFRG28; Z3CXXC4
Note:	Immunogen Sequence Homology: Human: 100%
Protein Families:	Druggable Genome



[View online »](#)

Product images:



WB Suggested Anti-RTP4 Antibody Titration: 0.2-1 ug/ml; ELISA Titer: 1:1562500; Positive Control: Human Lung