

## Product datasheet for **TA344690**

### DUS1L Rabbit Polyclonal Antibody

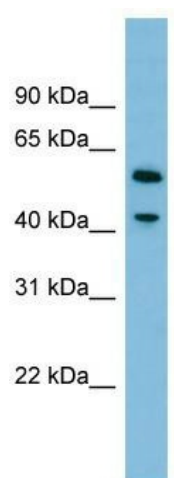
#### Product data:

Product Type:	Primary Antibodies
Applications:	WB
Recommended Dilution:	WB
Reactivity:	Human
Host:	Rabbit
Isotype:	IgG
Clonality:	Polyclonal
Immunogen:	The immunogen for anti-DUS1L antibody: synthetic peptide directed towards the middle region of human DUS1L. Synthetic peptide located within the following region: EEEEGGTEVLSKNKQKQLRNPHKTFDPSLKPKYAKCDQCGNPKGNRCVF
Formulation:	Liquid. Purified antibody supplied in 1x PBS buffer with 0.09% (w/v) sodium azide and 2% sucrose.
Purification:	Affinity Purified
Conjugation:	Unconjugated
Storage:	Store at -20°C as received.
Stability:	Stable for 12 months from date of receipt.
Predicted Protein Size:	53 kDa
Gene Name:	dihydrouridine synthase 1 like
Database Link:	<a href="#">NP_071439</a> <a href="#">Entrez Gene 64118 Human</a> <a href="#">Q6P1R4</a>
Background:	DUS1L catalyzes the synthesis of dihydrouridine, a modified base found in the D-loop of most tRNAs.
Synonyms:	DUS1; PP3111
Note:	Immunogen Sequence Homology: Dog: 100%; Pig: 100%; Rat: 100%; Horse: 100%; Human: 100%; Mouse: 100%; Guinea pig: 100%; Bovine: 92%



[View online »](#)

## Product images:



WB Suggested Anti-DUS1L Antibody Titration: 0.2-1 ug/ml; ELISA Titer: 1:1562500; Positive Control: HepG2 cell lysate DUS1L is supported by BioGPS gene expression data to be expressed in HepG2