

Product datasheet for **TA344689**

RRAGC Rabbit Polyclonal Antibody

Product data:

Product Type:	Primary Antibodies
Applications:	WB
Recommended Dilution:	WB
Reactivity:	Human
Host:	Rabbit
Isotype:	IgG
Clonality:	Polyclonal
Immunogen:	The immunogen for anti-RRAGC antibody: synthetic peptide directed towards the N terminal of human RRAGC. Synthetic peptide located within the following region: RSGKSSIQKVVFHKMSPNETLFLESTNKIYKDDISNSSFVNFQIWFDFPGQ
Formulation:	Liquid. Purified antibody supplied in 1x PBS buffer with 0.09% (w/v) sodium azide and 2% sucrose. <i>Note that this product is shipped as lyophilized powder to China customers.</i>
Purification:	Affinity Purified
Conjugation:	Unconjugated
Storage:	Store at -20°C as received.
Stability:	Stable for 12 months from date of receipt.
Predicted Protein Size:	44 kDa
Gene Name:	Ras related GTP binding C
Database Link:	NP_071440 Entrez Gene 64121 Human Q9HB90
Background:	RRAGC is a monomeric guanine nucleotide-binding protein, or G protein. By binding GTP or GDP, small G proteins act as molecular switches in numerous cell processes and signaling pathways.
Synonyms:	GTR2; RAGC; TIB929

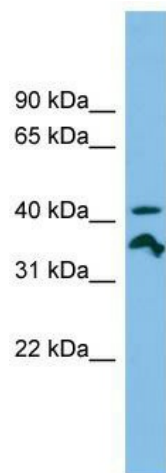


[View online »](#)

Note: Immunogen Sequence Homology: Dog: 100%; Pig: 100%; Rat: 100%; Horse: 100%; Human: 100%; Mouse: 100%; Sheep: 100%; Bovine: 100%; Rabbit: 100%; Guinea pig: 100%; Zebrafish: 93%

Protein Families: Transcription Factors

Product images:



WB Suggested Anti-RRAGC Antibody Titration:
0.2-1 ug/ml; ELISA Titer: 1:312500; Positive
Control: A549 cell lysate