

Product datasheet for **TA344687**

TINAGL1 Rabbit Polyclonal Antibody

Product data:

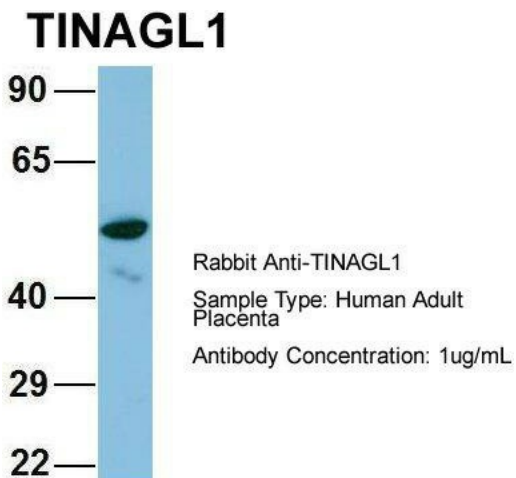
Product Type:	Primary Antibodies
Applications:	WB
Recommended Dilution:	WB
Reactivity:	Human
Host:	Rabbit
Isotype:	IgG
Clonality:	Polyclonal
Immunogen:	The immunogen for anti-TINAGL1 antibody: synthetic peptide directed towards the middle region of human TINAGL1. Synthetic peptide located within the following region: NLIHEPLDQGNCAAGSWAFSTAAVASDRVSIHSLGHMTPVLSPQNLLSCDT
Formulation:	Liquid. Purified antibody supplied in 1x PBS buffer with 0.09% (w/v) sodium azide and 2% sucrose. <i>Note that this product is shipped as lyophilized powder to China customers.</i>
Purification:	Affinity Purified
Conjugation:	Unconjugated
Storage:	Store at -20°C as received.
Stability:	Stable for 12 months from date of receipt.
Predicted Protein Size:	52 kDa
Gene Name:	tubulointerstitial nephritis antigen like 1
Database Link:	NP_071447 Entrez Gene 64129 Human Q9GZM7
Background:	TINAGL1 may be implicated in the adrenocortical zonation and in mechanisms for repressing the CYP11B1 gene expression in adrenocortical cells. This is a non catalytic peptidase C1 family protein.
Synonyms:	ARG1; LCN7; LIECG3; TINAGRP
Note:	Immunogen Sequence Homology: Dog: 100%; Pig: 100%; Rat: 100%; Horse: 100%; Human: 100%; Mouse: 100%; Bovine: 100%; Rabbit: 100%; Guinea pig: 100%; Zebrafish: 86%



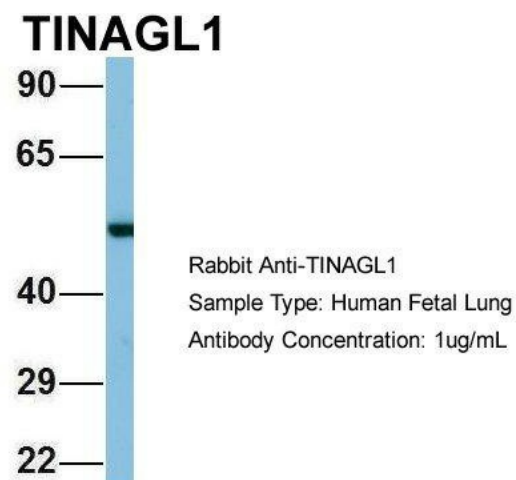
[View online »](#)

Protein Families: Druggable Genome, Protease, Secreted Protein

Product images:

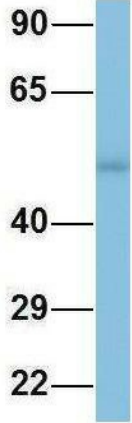


1Hum. Adult Placenta; Host: Rabbit; Target Name: CHAD; Sample Tissue: Human Adult Placenta; Antibody Dilution: 1.0 ug/ml



Host: Rabbit; Target Name: TINAGL1; Sample Tissue: Human Fetal Lung; Antibody Dilution: 1.0 ug/ml

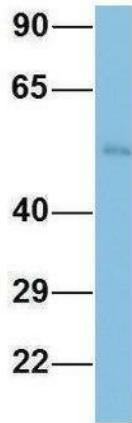
TINAGL1



Rabbit Anti-TINAGL1
 Sample Type: Human Fetal Liver
 Antibody Concentration: 1ug/mL

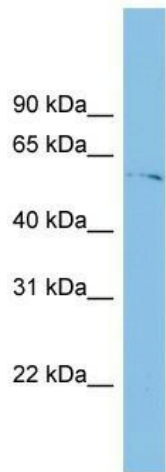
Host: Rabbit; Target Name: TINAGL1; Sample Tissue: Human Fetal Liver; Antibody Dilution: 1.0 ug/ml

TINAGL1



Rabbit Anti-TINAGL1
 Sample Type: Human Fetal Heart
 Antibody Concentration: 1ug/mL

Host: Rabbit; Target Name: TINAGL1; Sample Tissue: Human Fetal Heart; Antibody Dilution: 1.0 ug/ml



WB Suggested Anti-TINAGL1 Antibody Titration: 0.2-1 ug/ml; ELISA Titer: 1:312500; Positive Control: ACHN cell lysate TINAGL1 is supported by BioGPS gene expression data to be expressed in ACHN