

Product datasheet for **TA344685**

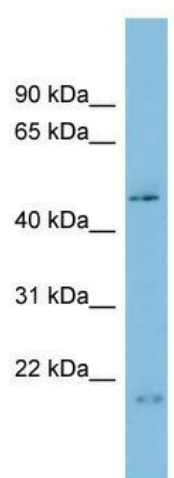
C17orf75 Rabbit Polyclonal Antibody

Product data:

Product Type:	Primary Antibodies
Applications:	WB
Recommended Dilution:	WB
Reactivity:	Human
Host:	Rabbit
Isotype:	IgG
Clonality:	Polyclonal
Immunogen:	The immunogen for anti-C17orf75 antibody: synthetic peptide directed towards the N terminal of human C17orf75. Synthetic peptide located within the following region: SSHYCLYSYRGSRLAQQRGDSEDGSPSGTNAETPSGDDFSLSLADTNLPS
Formulation:	Liquid. Purified antibody supplied in 1x PBS buffer with 0.09% (w/v) sodium azide and 2% sucrose. <i>Note that this product is shipped as lyophilized powder to China customers.</i>
Purification:	Affinity Purified
Conjugation:	Unconjugated
Storage:	Store at -20°C as received.
Stability:	Stable for 12 months from date of receipt.
Predicted Protein Size:	44 kDa
Gene Name:	chromosome 17 open reading frame 75
Database Link:	NP_071739 Entrez Gene 64149 Human Q9HAS0
Background:	The function of this protein remains unknown.
Synonyms:	NJMU-R1; SRI2
Note:	Immunogen Sequence Homology: Human: 100%; Pig: 93%; Rat: 93%; Guinea pig: 93%; Horse: 92%; Dog: 86%; Rabbit: 86%; Bovine: 79%
Protein Families:	Druggable Genome



[View online »](#)

Product images:

WB Suggested Anti-C17orf75 Antibody Titration:
0.2-1 ug/ml; ELISA Titer: 1:1562500; Positive
Control: Jurkat cell lysate