

Product datasheet for **TA344682**

RAB17 Rabbit Polyclonal Antibody

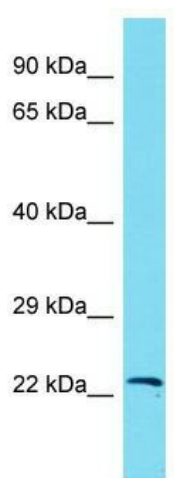
Product data:

Product Type:	Primary Antibodies
Applications:	WB
Recommended Dilution:	WB
Reactivity:	Mouse
Host:	Rabbit
Isotype:	IgG
Clonality:	Polyclonal
Immunogen:	The immunogen for Anti-Rab17 antibody is: synthetic peptide directed towards the N-terminal region of Mouse Rab17. Synthetic peptide located within the following region: GSSSLKLEIWDTAGQEKYQSVCHLYFRGANAALLVYDITRKDSFHKAQQW
Formulation:	Liquid. Purified antibody supplied in 1x PBS buffer with 0.09% (w/v) sodium azide and 2% sucrose. <i>Note that this product is shipped as lyophilized powder to China customers.</i>
Purification:	Affinity Purified
Conjugation:	Unconjugated
Storage:	Store at -20°C as received.
Stability:	Stable for 12 months from date of receipt.
Predicted Protein Size:	24 kDa
Gene Name:	RAB17, member RAS oncogene family
Database Link:	NP_071894 Entrez Gene 19329 Mouse Q9H0T7
Background:	Rab17 might be involved in transcellular transport.
Synonyms:	FLJ12538
Note:	Immunogen Sequence Homology: Dog: 100%; Rat: 100%; Horse: 100%; Human: 100%; Mouse: 100%; Bovine: 100%; Pig: 86%; Goat: 86%; Guinea pig: 86%
Protein Families:	Druggable Genome



[View online »](#)

Product images:



Host: Rabbit; Target Name: Rab17; Sample
Tissue: Mouse Testis lysates; Antibody Dilution:
1.0 ug/ml