

Product datasheet for **TA344681**

RAB17 Rabbit Polyclonal Antibody

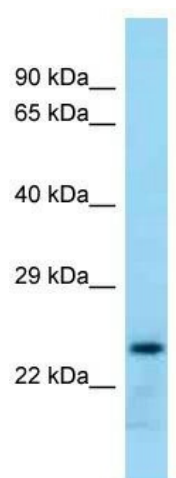
Product data:

Product Type:	Primary Antibodies
Applications:	WB
Recommended Dilution:	WB
Reactivity:	Rat
Host:	Rabbit
Isotype:	IgG
Clonality:	Polyclonal
Immunogen:	The immunogen for Anti-Rab17 antibody is: synthetic peptide directed towards the middle region of Rab17. Synthetic peptide located within the following region: HPGEVVMLVGNKTDLGEEREVTFQEGKEFAESKSLFMESSAKLNYQVS
Formulation:	Liquid. Purified antibody supplied in 1x PBS buffer with 0.09% (w/v) sodium azide and 2% sucrose. <i>Note that this product is shipped as lyophilized powder to China customers.</i>
Purification:	Affinity Purified
Conjugation:	Unconjugated
Storage:	Store at -20°C as received.
Stability:	Stable for 12 months from date of receipt.
Predicted Protein Size:	23 kDa
Gene Name:	RAB17, member RAS oncogene family
Database Link:	NP_071894 Entrez Gene 503269 Rat Q9H0T7
Background:	The function of this protein remains unknown.
Synonyms:	FLJ12538
Note:	Immunogen Sequence Homology: Human: 100%; Dog: 93%; Rat: 93%; Mouse: 93%; Horse: 86%; Bovine: 86%; Pig: 79%; Guinea pig: 79%
Protein Families:	Druggable Genome



[View online »](#)

Product images:



WB Suggested Anti-Rab17 Antibody; Titration: 1.0 ug/ml; Positive Control: Rat Lung