

## Product datasheet for **TA344678**

### Gremlin 1 (GREM1) Rabbit Polyclonal Antibody

#### Product data:

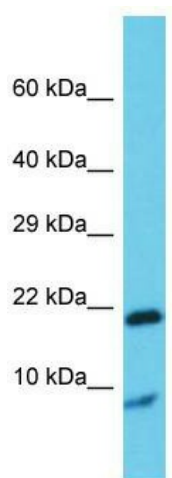
Product Type:	Primary Antibodies
Applications:	WB
Recommended Dilution:	WB
Reactivity:	Rat, Mouse
Host:	Rabbit
Isotype:	IgG
Clonality:	Polyclonal
Immunogen:	The immunogen for Anti-Grem1 antibody is: synthetic peptide directed towards the middle region of Rat Grem1. Synthetic peptide located within the following region: PQPGSRTRGRGQGRGTAMPGEEVLESSQEALHVTERKYLKRDWCKTQPLK
Formulation:	Liquid. Purified antibody supplied in 1x PBS buffer with 0.09% (w/v) sodium azide and 2% sucrose. <i>Note that this product is shipped as lyophilized powder to China customers.</i>
Purification:	Affinity Purified
Conjugation:	Unconjugated
Storage:	Store at -20°C as received.
Stability:	Stable for 12 months from date of receipt.
Predicted Protein Size:	20 kDa
Gene Name:	gremlin 1, DAN family BMP antagonist
Database Link:	<a href="#">NP_037504</a> <a href="#">Entrez Gene 23892 Mouse</a> <a href="#">Entrez Gene 50566 Rat</a> <a href="#">O60565</a>
Background:	Grem1 is a protein may play a role in cellular growth control, viability and differentiation; high expression levels may induce apoptosis.
Synonyms:	C15DUPq; CKTSF1B1; CRAC1; CRCS4; DAND2; DRM; DUP15q; GREMLIN; HMPS; HMPS1; IHG-2; MPSH; PIG2
Note:	Immunogen Sequence Homology: Dog: 100%; Pig: 100%; Rat: 100%; Horse: 100%; Human: 100%; Mouse: 100%; Guinea pig: 100%; Zebrafish: 93%; Goat: 92%; Bovine: 92%; Rabbit: 92%



[View online »](#)

Protein Families: ES Cell Differentiation/IPS, Secreted Protein

### Product images:



Host: Rabbit; Target Name: Grem1; Sample  
Tissue: Rat Testis lysates; Antibody Dilution: 1.0  
ug/ml