

Product datasheet for **TA344676**

PRAF1 (POLR1E) Rabbit Polyclonal Antibody

Product data:

Product Type:	Primary Antibodies
Applications:	WB
Recommended Dilution:	WB
Reactivity:	Human, Mouse
Host:	Rabbit
Isotype:	IgG
Clonality:	Polyclonal
Immunogen:	The immunogen for anti-POLR1E antibody: synthetic peptide directed towards the N terminal of human POLR1E. Synthetic peptide located within the following region: SPGNMRFTLYENKDSTNPRKRNRILAAETDRLSYVGNFNGTGALKCNTL
Formulation:	Liquid. Purified antibody supplied in 1x PBS buffer with 0.09% (w/v) sodium azide and 2% sucrose. <i>Note that this product is shipped as lyophilized powder to China customers.</i>
Purification:	Affinity Purified
Conjugation:	Unconjugated
Storage:	Store at -20°C as received.
Stability:	Stable for 12 months from date of receipt.
Predicted Protein Size:	47 kDa
Gene Name:	polymerase (RNA) I subunit E
Database Link:	NP_071935 Entrez Gene 64424 Mouse Entrez Gene 64425 Human Q9GZS1
Background:	POLR1E is a DNA-dependent RNA polymerase catalyzes the transcription of DNA into RNA using the four ribonucleoside triphosphates as substrates. POLR1E is the component of RNA polymerase I which synthesizes ribosomal RNA precursors. POLR1E appears to be involved in the formation of the initiation complex at the promoter by mediating the interaction between Pol I and UBTF/UBF.
Synonyms:	PAF53; PRAF1



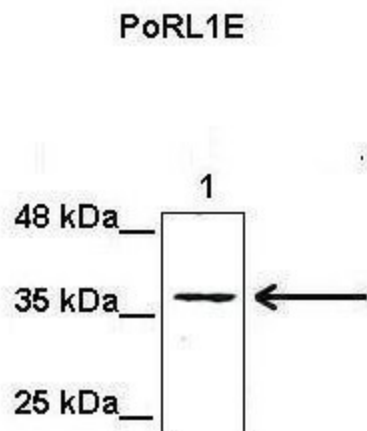
[View online »](#)

Note: Immunogen Sequence Homology: Dog: 100%; Pig: 100%; Rat: 100%; Horse: 100%; Human: 100%; Mouse: 100%; Bovine: 100%; Guinea pig: 100%; Rabbit: 93%

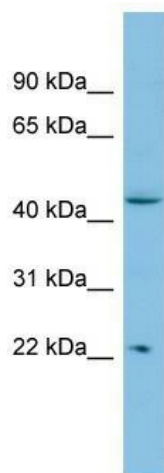
Protein Families: Transcription Factors

Protein Pathways: Metabolic pathways, Purine metabolism, Pyrimidine metabolism, RNA polymerase

Product images:



Lanes: Lane 1: 50 ug mouse heptoma cell lysate; Primary Antibody Dilution: 1:1000; Secondary Antibody: Anti-rabbit HRP; Secondary Antibody Dilution: 1:5000; Gene Name: PORL1E; Submitted by: Eekjoong Park, UCSD;



WB Suggested Anti-POLR1E Antibody Titration: 0.2-1 ug/ml; ELISA Titer: 1:312500; Positive Control: HeLa cell lysate