

## Product datasheet for **TA344673**

### ATPAF1 Rabbit Polyclonal Antibody

#### Product data:

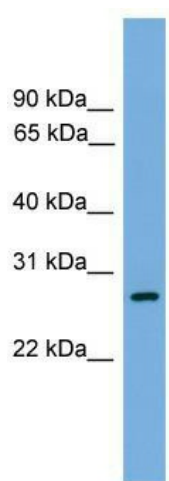
Product Type:	Primary Antibodies
Applications:	WB
Recommended Dilution:	WB
Reactivity:	Human
Host:	Rabbit
Isotype:	IgG
Clonality:	Polyclonal
Immunogen:	The immunogen for anti-ATPAF1 antibody: synthetic peptide directed towards the N terminal of human ATPAF1. Synthetic peptide located within the following region: GLGLVSPAQLRVFPVRPGSGRPEGADSSGVGAEELQANPFYDRYRDKI
Formulation:	Liquid. Purified antibody supplied in 1x PBS buffer with 0.09% (w/v) sodium azide and 2% sucrose. <i>Note that this product is shipped as lyophilized powder to China customers.</i>
Purification:	Affinity Purified
Conjugation:	Unconjugated
Storage:	Store at -20°C as received.
Stability:	Stable for 12 months from date of receipt.
Predicted Protein Size:	29 kDa
Gene Name:	ATP synthase mitochondrial F1 complex assembly factor 1
Database Link:	<a href="#">NP_001036011</a> <a href="#">Entrez Gene 64756 Human</a> <a href="#">Q5TC12</a>
Background:	This gene encodes an assembly factor for the F(1) component of the mitochondrial ATP synthase. This protein binds specifically to the F1 beta subunit and is thought to prevent this subunit from forming nonproductive homooligomers during enzyme assembly. Alternatively spliced transcript variants have been identified, but the biological validity of some of these variants has not been determined.
Synonyms:	ATP11; ATP11p



[View online »](#)

**Note:** Immunogen Sequence Homology: Human: 100%; Dog: 93%; Mouse: 93%; Bovine: 93%; Pig: 86%; Rat: 86%; Guinea pig: 86%; Rabbit: 79%

### Product images:



WB Suggested Anti-ATPAF1 Antibody Titration:  
0.2-1 ug/ml; Positive Control: MCF7 cell lysate