

Product datasheet for **TA344670**

IPPK Rabbit Polyclonal Antibody

Product data:

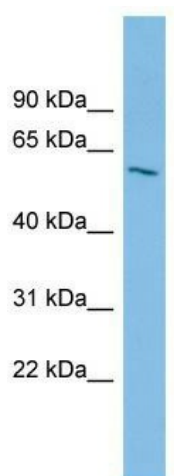
Product Type:	Primary Antibodies
Applications:	WB
Recommended Dilution:	WB
Reactivity:	Human
Host:	Rabbit
Isotype:	IgG
Clonality:	Polyclonal
Immunogen:	The immunogen for anti-IPPK antibody: synthetic peptide directed towards the middle region of human IPPK. Synthetic peptide located within the following region: KTLQVQMLDLLDIEGLYPLYNRVERYLEEFPEERKTLQIDGPYDEAFYQK
Formulation:	Liquid. Purified antibody supplied in 1x PBS buffer with 0.09% (w/v) sodium azide and 2% sucrose. <i>Note that this product is shipped as lyophilized powder to China customers.</i>
Purification:	Affinity Purified
Conjugation:	Unconjugated
Storage:	Store at -20°C as received.
Stability:	Stable for 12 months from date of receipt.
Predicted Protein Size:	56 kDa
Gene Name:	inositol-pentakisphosphate 2-kinase
Database Link:	NP_073592 Entrez Gene 64768 Human Q9H8X2
Background:	IPPK phosphorylates Ins(1,3,4,5,6)P5 at position 2 to form Ins(1,2,3,4,5,6)P6 (InsP6 or phytate). InsP6 is involved in many processes such as mRNA export, non-homologous end-joining, endocytosis, ion channel regulation. It also protects cells from TNF-alpha-induced apoptosis.
Synonyms:	bA476B13.1; C9orf12; INSP5K2; IP5K; IPK1
Note:	Immunogen Sequence Homology: Rat: 100%; Horse: 100%; Human: 100%; Mouse: 100%; Bovine: 100%; Rabbit: 100%; Pig: 93%; Guinea pig: 93%; Zebrafish: 85%; Dog: 79%



[View online »](#)

Protein Pathways: Inositol phosphate metabolism, Metabolic pathways, Phosphatidylinositol signaling system

Product images:



WB Suggested Anti-IPPK Antibody Titration: 0.2-1 ug/ml; ELISA Titer: 1:312500; Positive Control: HepG2 cell lysate