

## Product datasheet for **TA344669**

### IPPK Rabbit Polyclonal Antibody

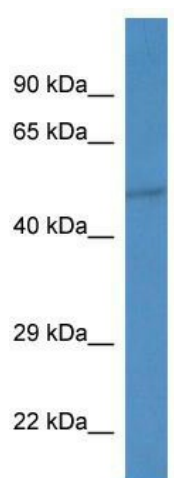
#### Product data:

Product Type:	Primary Antibodies
Applications:	WB
Recommended Dilution:	WB
Reactivity:	Mouse
Host:	Rabbit
Isotype:	IgG
Clonality:	Polyclonal
Immunogen:	The immunogen for anti-Ippk antibody: synthetic peptide corresponding to a region of Mouse. Synthetic peptide located within the following region: VFYQKLLDLSTEDDGTVAFALTKVQYRVAMTAKDCSIMIALSPCLQGTS
Formulation:	Liquid. Purified antibody supplied in 1x PBS buffer with 0.09% (w/v) sodium azide and 2% sucrose. <i>Note that this product is shipped as lyophilized powder to China customers.</i>
Purification:	Affinity Purified
Conjugation:	Unconjugated
Storage:	Store at -20°C as received.
Stability:	Stable for 12 months from date of receipt.
Predicted Protein Size:	54 kDa
Gene Name:	inositol-pentakisphosphate 2-kinase
Database Link:	<a href="#">NP_073592</a> <a href="#">Entrez Gene 75678 Mouse</a> <a href="#">Q9H8X2</a>
Background:	The function of this protein remains unknown.
Synonyms:	bA476B13.1; C9orf12; INSP5K2; IP5K; IPK1
Note:	Immunogen Sequence Homology: Dog: 100%; Pig: 100%; Rat: 100%; Horse: 100%; Human: 100%; Mouse: 100%; Guinea pig: 100%; Bovine: 93%; Rabbit: 93%
Protein Pathways:	Inositol phosphate metabolism, Metabolic pathways, Phosphatidylinositol signaling system



[View online »](#)

## Product images:



WB Suggested Anti-Ippk Antibody; Titration: 1.0 ug/ml; Positive Control: Mouse Liver