

Product datasheet for **TA344668**

MTRR Rabbit Polyclonal Antibody

Product data:

Product Type:	Primary Antibodies
Applications:	WB
Recommended Dilution:	WB
Reactivity:	Human
Host:	Rabbit
Isotype:	IgG
Clonality:	Polyclonal
Immunogen:	The immunogen for anti-MTRR antibody: synthetic peptide directed towards the N terminal of human MTRR. Synthetic peptide located within the following region: YDLKTETAPLVVVSTTGTGDPPTARKFVKEIQNTLPVDFFAHLRYGL
Formulation:	Liquid. Purified antibody supplied in 1x PBS buffer with 0.09% (w/v) sodium azide and 2% sucrose. <i>Note that this product is shipped as lyophilized powder to China customers.</i>
Purification:	Affinity Purified
Conjugation:	Unconjugated
Storage:	Store at -20°C as received.
Stability:	Stable for 12 months from date of receipt.
Predicted Protein Size:	80 kDa
Gene Name:	5-methyltetrahydrofolate-homocysteine methyltransferase reductase
Database Link:	NP_076915 Entrez Gene 4552 Human Q9UBK8

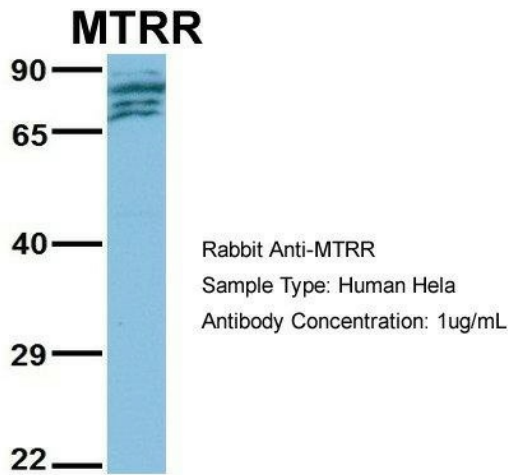


[View online »](#)

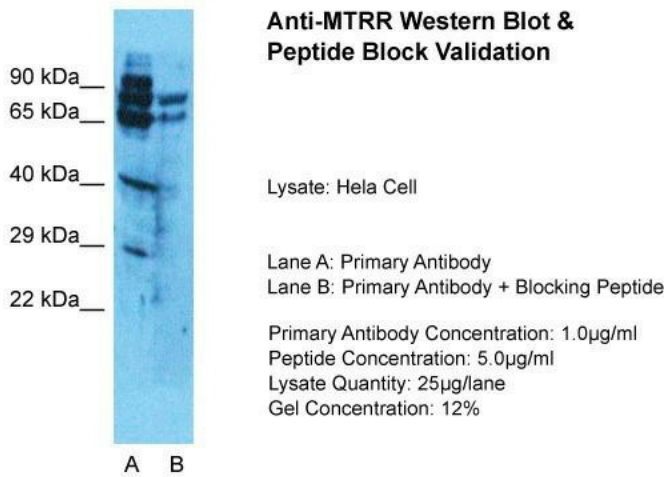
- Background:** Methionine is an essential amino acid required for protein synthesis and one-carbon metabolism. Its synthesis is catalyzed by the enzyme methionine synthase. Methionine synthase eventually becomes inactive due to the oxidation of its cob(I)alamin cofactor. The protein encoded by this gene regenerates a functional methionine synthase via reductive methylation. It is a member of the ferredoxin-NADP(+) reductase (FNR) family of electron transferases. Patients of the cbl-E complementation group of disorders of folate/cobalamin metabolism are defective in reductive activation of methionine synthase. Alternative splicing of this gene results in multiple transcript variants encoding distinct isoforms.
- Synonyms:** cblE; MSR
- Note:** Immunogen Sequence Homology: Dog: 100%; Pig: 100%; Rat: 100%; Human: 100%; Mouse: 100%; Rabbit: 100%; Horse: 93%; Bovine: 93%; Guinea pig: 93%
- Protein Families:** Druggable Genome

Product images:

WB Suggested Anti-MTRR Antibody Titration: 0.2-1 ug/ml; ELISA Titer: 1:312500; Positive Control: HepG2 cell lysate



WB Suggested Anti-MTRR Antibody Titration: 1 ug/ml; Positive Control: HeLa cell lysate



Host: Rabbit; Target Name: MTRR; Sample Tissue: HeLa; Lane A: Primary Antibody; Lane B: Primary Antibody + Blocking Peptide ; Primary Antibody Concentration:1 ug/ml; Peptide Concentration: 5.0 ug/ml; Lysate Quantity: 25ug/lane/lane; Gel Concentration: 12%MT