

Product datasheet for **TA344665**

BBS1 Rabbit Polyclonal Antibody

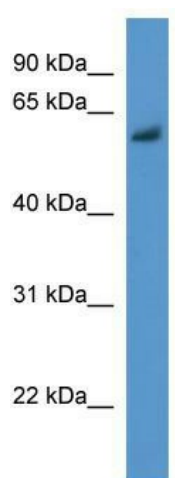
Product data:

Product Type:	Primary Antibodies
Applications:	WB
Recommended Dilution:	WB
Reactivity:	Mouse
Host:	Rabbit
Isotype:	IgG
Clonality:	Polyclonal
Immunogen:	The immunogen for anti-Bbs1 antibody: synthetic peptide corresponding to a region of Mouse. Synthetic peptide located within the following region: PCVYVYKNLRPYFKFSLPQLPPNPLEQDVWNQAKEDQIDPLTLKEMLEDI
Formulation:	Liquid. Purified antibody supplied in 1x PBS buffer with 0.09% (w/v) sodium azide and 2% sucrose.
Purification:	Affinity Purified
Conjugation:	Unconjugated
Storage:	Store at -20°C as received.
Stability:	Stable for 12 months from date of receipt.
Predicted Protein Size:	65 kDa
Gene Name:	Bardet-Biedl syndrome 1
Database Link:	NP_078925 Entrez Gene 52028 Mouse Q8NFI9
Background:	The function of this protein remains unknown.
Synonyms:	BBS2L2
Note:	Immunogen Sequence Homology: Rat: 100%; Horse: 100%; Human: 100%; Mouse: 100%; Dog: 93%; Pig: 93%; Bovine: 86%; Guinea pig: 86%



[View online »](#)

Product images:



WB Suggested Anti-Bbs1 Antibody Titration: 0.2-1 ug/ml; ELISA Titer: 1:1562500; Positive Control: Mouse liver