

## Product datasheet for **TA344663**

### USP36 Rabbit Polyclonal Antibody

#### Product data:

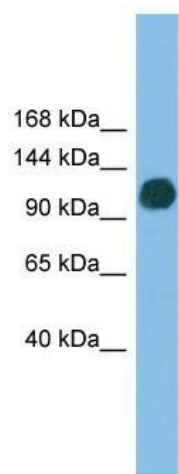
Product Type:	Primary Antibodies
Applications:	WB
Recommended Dilution:	WB
Reactivity:	Human
Host:	Rabbit
Isotype:	IgG
Clonality:	Polyclonal
Immunogen:	The immunogen for anti-USP36 antibody: synthetic peptide directed towards the N terminal of human USP36. Synthetic peptide located within the following region: SRHKSGDDPPARRQGSEHTYESCGDGVAPQKVLFPTERLSLRWVERVFRV
Formulation:	Liquid. Purified antibody supplied in 1x PBS buffer with 0.09% (w/v) sodium azide and 2% sucrose. <i>Note that this product is shipped as lyophilized powder to China customers.</i>
Purification:	Affinity Purified
Conjugation:	Unconjugated
Storage:	Store at -20°C as received.
Stability:	Stable for 12 months from date of receipt.
Predicted Protein Size:	123 kDa
Gene Name:	ubiquitin specific peptidase 36
Database Link:	<a href="#">NP_079366</a> <a href="#">Entrez Gene 57602 Human Q9P275</a>
Background:	Modification of cellular proteins by ubiquitin is an essential regulatory mechanism controlled by the coordinated action of multiple ubiquitin-conjugating and deubiquitinating enzymes. USP36 belongs to a large family of cysteine proteases that function as deubiquitinating enzymes (Quesada et al., 2004 [PubMed 14715245]).
Synonyms:	DUB1
Note:	Immunogen Sequence Homology: Human: 100%; Bovine: 92%; Dog: 85%; Horse: 77%



[View online »](#)

Protein Families: Druggable Genome, Protease

### Product images:



WB Suggested Anti-USP36 Antibody Titration: 0.2-1 ug/ml; ELISA Titer: 1:1562500; Positive Control: Human brain