

## Product datasheet for **TA344660**

### Neuronal calcium binding protein (NECAB3) Rabbit Polyclonal Antibody

#### Product data:

Product Type:	Primary Antibodies
Applications:	WB
Recommended Dilution:	WB
Reactivity:	Human
Host:	Rabbit
Isotype:	IgG
Clonality:	Polyclonal
Immunogen:	The immunogen for anti-NECAB3 antibody: synthetic peptide directed towards the middle region of human NECAB3. Synthetic peptide located within the following region: ESVEAQSRLCGSRRAGRRALRSVRSSTWSPGSSDTGRSSEAEMQWRLQV
Formulation:	Liquid. Purified antibody supplied in 1x PBS buffer with 0.09% (w/v) sodium azide and 2% sucrose.
Purification:	Affinity Purified
Conjugation:	Unconjugated
Storage:	Store at -20°C as received.
Stability:	Stable for 12 months from date of receipt.
Predicted Protein Size:	44 kDa
Gene Name:	N-terminal EF-hand calcium binding protein 3
Database Link:	<a href="#">NP_112509</a> <a href="#">Entrez Gene 63941 Human</a> <a href="#">Q96P71</a>



[View online »](#)

**Background:**

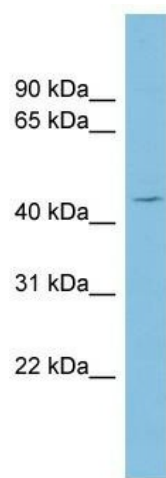
The protein encoded by this gene interacts with the amino-terminal domain of the neuron-specific X11-like protein (X11L), inhibits the association of X11L with amyloid precursor protein through a non-competitive mechanism, and abolishes the suppression of beta-amyloid production by X11L. This protein, together with X11L, may play an important role in the regulatory system of amyloid precursor protein metabolism and beta-amyloid generation. The protein is phosphorylated by NIMA-related expressed kinase 2, and localizes to the Golgi apparatus. Multiple transcript variants encoding different isoforms have been found for this gene.

**Synonyms:**

APBA2BP; dj63M2.4; dj63M2.5; EFCBP3; NIP1; STIP3; SYTIP2; XB51

**Note:**

Immunogen Sequence Homology: Rat: 100%; Human: 100%; Mouse: 100%; Dog: 93%; Pig: 93%; Horse: 93%; Rabbit: 93%; Bovine: 86%

**Product images:**

WB Suggested Anti-NECAB3 Antibody Titration: 0.2-1 ug/ml; ELISA Titer: 1:312500; Positive Control: HeLa cell lysate NECAB3 is supported by BioGPS gene expression data to be expressed in HeLa