

## Product datasheet for **TA344657**

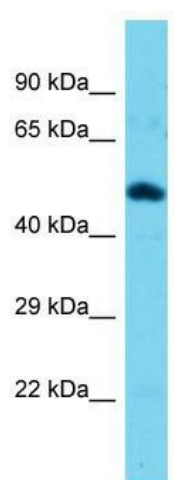
### TEKT3 Rabbit Polyclonal Antibody

#### Product data:

Product Type:	Primary Antibodies
Applications:	WB
Recommended Dilution:	WB
Reactivity:	Mouse
Host:	Rabbit
Isotype:	IgG
Clonality:	Polyclonal
Immunogen:	The immunogen for Anti-Tekt3 antibody is: synthetic peptide directed towards the N-terminal region of Mouse Tekt3. Synthetic peptide located within the following region: NSSRHNSERLRVDTSRLIQDKYQQIRKTQAHSTQNLGERVNDLAFWKSEI
Formulation:	Liquid. Purified antibody supplied in 1x PBS buffer with 0.09% (w/v) sodium azide and 2% sucrose.
Purification:	Affinity Purified
Conjugation:	Unconjugated
Storage:	Store at -20°C as received.
Stability:	Stable for 12 months from date of receipt.
Predicted Protein Size:	54 kDa
Gene Name:	tektin 3
Database Link:	<a href="#">NP_114104</a> <a href="#">Entrez Gene 71062 Mouse</a> <a href="#">Q9BXF9</a>
Background:	Tekt3 is a structural component of ciliary and flagellar microtubules. It forms filamentous polymers in the walls of ciliary and flagellar microtubules. It is required for progressive sperm mobility.
Synonyms:	FLJ32828
Note:	Immunogen Sequence Homology: Dog: 100%; Pig: 100%; Rat: 100%; Horse: 100%; Human: 100%; Mouse: 100%; Bovine: 100%; Rabbit: 100%; Guinea pig: 100%


[View online »](#)

## Product images:



Host: Rabbit; Target Name: Tekt3; Sample Tissue: Mouse Muscle lysates; Antibody Dilution: 1.0 ug/ml