

Product datasheet for **TA344656**

GRASP65 (GORASP1) Rabbit Polyclonal Antibody

Product data:

Product Type:	Primary Antibodies
Applications:	WB
Recommended Dilution:	WB
Reactivity:	Human, Rat
Host:	Rabbit
Isotype:	IgG
Clonality:	Polyclonal
Immunogen:	The immunogen for anti-GORASP1 antibody: synthetic peptide directed towards the N terminal of human GORASP1. Synthetic peptide located within the following region: MGLGVSAEQPAGGAEGFHLHGVQENSPAQQAGLEPYDFIITIGHSRLNK
Formulation:	Liquid. Purified antibody supplied in 1x PBS buffer with 0.09% (w/v) sodium azide and 2% sucrose. <i>Note that this product is shipped as lyophilized powder to China customers.</i>
Purification:	Affinity Purified
Conjugation:	Unconjugated
Storage:	Store at -20°C as received.
Stability:	Stable for 12 months from date of receipt.
Predicted Protein Size:	46 kDa
Gene Name:	golgi reassembly stacking protein 1
Database Link:	NP_114105 Entrez Gene 56082 Rat Entrez Gene 64689 Human Q9BQQ3



[View online »](#)

Background:

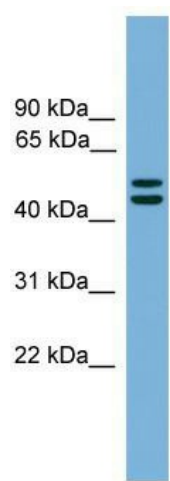
The Golgi complex plays a key role in the sorting and modification of proteins exported from the endoplasmic reticulum. The protein encoded by this gene is a membrane protein involved in establishing the stacked structure of the Golgi apparatus. It is a caspase-3 substrate, and cleavage of this encoded protein contributes to Golgi fragmentation in apoptosis. This encoded protein can form a complex with the Golgi matrix protein GOLGA2, and this complex binds to the vesicle docking protein p115. Several alternatively spliced transcript variants of this gene have been identified, but their full-length natures have not been determined.

Synonyms:

GOLPH5; GRASP65; P65

Note:

Immunogen Sequence Homology: Dog: 100%; Pig: 100%; Rat: 100%; Horse: 100%; Human: 100%; Mouse: 100%; Bovine: 100%; Rabbit: 100%; Guinea pig: 100%; Zebrafish: 79%

Product images:

WB Suggested Anti-GORASP1 Antibody Titration: 0.2-1 ug/ml; ELISA Titer: 1:312500; Positive Control: HeLa cell lysate GORASP1 is supported by BioGPS gene expression data to be expressed in HeLa