

Product datasheet for **TA344652**

PKIB Rabbit Polyclonal Antibody

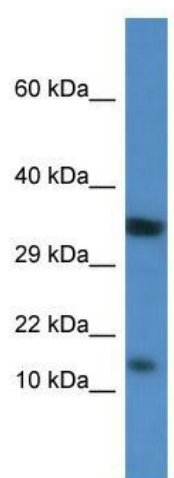
Product data:

Product Type:	Primary Antibodies
Applications:	WB
Recommended Dilution:	WB
Reactivity:	Rat
Host:	Rabbit
Isotype:	IgG
Clonality:	Polyclonal
Immunogen:	The immunogen for anti-Pkib antibody: synthetic peptide corresponding to a region of Rat. Synthetic peptide located within the following region: TDVESVISSFASSARAGRRLPDIQSSLATGGSPDLALKLEALAVKEDA
Formulation:	Liquid. Purified antibody supplied in 1x PBS buffer with 0.09% (w/v) sodium azide and 2% sucrose. <i>Note that this product is shipped as lyophilized powder to China customers.</i>
Purification:	Affinity Purified
Conjugation:	Unconjugated
Storage:	Store at -20°C as received.
Stability:	Stable for 12 months from date of receipt.
Predicted Protein Size:	12 kDa
Gene Name:	protein kinase (cAMP-dependent, catalytic) inhibitor beta
Database Link:	NP_861460 Entrez Gene 24678 Rat Q9C010
Background:	Pkib displays strong inhibition of the activity of cAMP-dependent protein kinase.
Synonyms:	PRKACN2
Note:	Immunogen Sequence Homology: Rat: 100%; Human: 100%; Mouse: 100%; Rabbit: 100%; Zebrafish: 100%; Pig: 92%; Guinea pig: 92%; Dog: 90%; Horse: 90%; Bovine: 90%; Goat: 85%
Protein Families:	Druggable Genome



[View online »](#)

Product images:



WB Suggested Anti-Pkib Antibody; Titration: 1.0 ug/ml; Positive Control: Rat Kidney