

Product datasheet for **TA344651**

Smek1 (PPP4R3A) Rabbit Polyclonal Antibody

Product data:

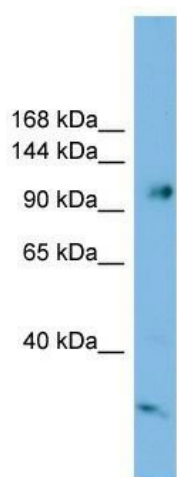
Product Type:	Primary Antibodies
Applications:	WB
Recommended Dilution:	WB
Reactivity:	Human
Host:	Rabbit
Isotype:	IgG
Clonality:	Polyclonal
Immunogen:	The immunogen for anti-SMEK1 antibody: synthetic peptide directed towards the middle region of human SMEK1. Synthetic peptide located within the following region: YWKALEVDVYVQTFKGLKLRFEQQRERQDNPKLDSMRSILRNHRYRRDAR
Formulation:	Liquid. Purified antibody supplied in 1x PBS buffer with 0.09% (w/v) sodium azide and 2% sucrose. <i>Note that this product is shipped as lyophilized powder to China customers.</i>
Purification:	Affinity Purified
Conjugation:	Unconjugated
Storage:	Store at -20°C as received.
Stability:	Stable for 12 months from date of receipt.
Predicted Protein Size:	94 kDa
Gene Name:	protein phosphatase 4 regulatory subunit 3A
Database Link:	NP_115949 Entrez Gene 55671 Human Q6IN85
Background:	SMEK1 is the regulatory subunit of serine/threonine-protein phosphatase 4. SMEK1 may regulate the activity of PPP4C at centrosomal microtubule organizing centers. The PPP4C-PPP4R2-PPP4R3A PP4 complex specifically dephosphorylates H2AFX phosphorylated on 'Ser-140' (gamma-H2AFX) generated during DNA replication and required for DNA DSB repair.
Synonyms:	FLFL1; KIAA2010; MSTP033; PP4R3A; smk-1; smk1



[View online »](#)

Note: Immunogen Sequence Homology: Dog: 100%; Pig: 100%; Rat: 100%; Horse: 100%; Human: 100%; Mouse: 100%; Bovine: 100%; Rabbit: 100%; Zebrafish: 100%; Guinea pig: 100%

Product images:



WB Suggested Anti-SMEK1 Antibody Titration: 0.2-1 ug/ml; ELISA Titer: 1:1562500; Positive Control: HeLa cell lysate SMEK1 is supported by BioGPS gene expression data to be expressed in HeLa