

Product datasheet for **TA344650**

POLR2C Rabbit Polyclonal Antibody

Product data:

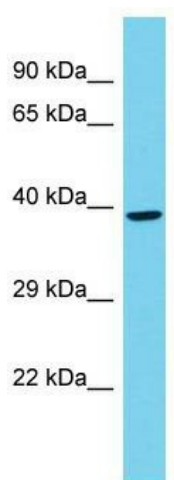
Product Type:	Primary Antibodies
Applications:	WB
Recommended Dilution:	WB
Reactivity:	Mouse
Host:	Rabbit
Isotype:	IgG
Clonality:	Polyclonal
Immunogen:	The immunogen for Anti-Polr2c antibody is: synthetic peptide directed towards the C-terminal region of Mouse Polr2c. Synthetic peptide located within the following region: YDPDNLRHTVYPKPEEWPKSEYSELDEDESQAPYDPNGKPERLGDGPR
Formulation:	Liquid. Purified antibody supplied in 1x PBS buffer with 0.09% (w/v) sodium azide and 2% sucrose. <i>Note that this product is shipped as lyophilized powder to China customers.</i>
Purification:	Affinity Purified
Conjugation:	Unconjugated
Storage:	Store at -20°C as received.
Stability:	Stable for 12 months from date of receipt.
Predicted Protein Size:	36 kDa
Gene Name:	polymerase (RNA) II subunit C
Database Link:	NP_116558 Entrez Gene 20021 Mouse P19387
Background:	The function of this protein remains unknown.
Synonyms:	hRPB33; hsRPB3; RPB3; RPB31
Note:	Immunogen Sequence Homology: Dog: 100%; Pig: 100%; Rat: 100%; Horse: 100%; Human: 100%; Mouse: 100%; Bovine: 100%; Rabbit: 100%; Guinea pig: 100%
Protein Families:	Druggable Genome, Transcription Factors



[View online »](#)

Protein Pathways: Huntington's disease, Metabolic pathways, Purine metabolism, Pyrimidine metabolism, RNA polymerase

Product images:



Host: Rabbit; Target Name: Polr2c; Sample Tissue: Mouse Testis lysates; Antibody Dilution: 1.0 ug/ml