

Product datasheet for **TA344649**

PLAT Rabbit Polyclonal Antibody

Product data:

Product Type:	Primary Antibodies
Applications:	WB
Recommended Dilution:	WB
Reactivity:	Human
Host:	Rabbit
Isotype:	IgG
Clonality:	Polyclonal
Immunogen:	The immunogen for anti-PLAT antibody: synthetic peptide directed towards the middle region of human PLAT. Synthetic peptide located within the following region: TVILGRTYRVVPGEEEQKFEVEKYIVHKEFDDDTYDNDIALQLKSDSSR
Formulation:	Liquid. Purified antibody supplied in 1x PBS buffer with 0.09% (w/v) sodium azide and 2% sucrose. <i>Note that this product is shipped as lyophilized powder to China customers.</i>
Purification:	Affinity Purified
Conjugation:	Unconjugated
Storage:	Store at -20°C as received.
Stability:	Stable for 12 months from date of receipt.
Predicted Protein Size:	53 kDa
Gene Name:	plasminogen activator, tissue type
Database Link:	NP_127509 Entrez Gene 5327 Human P00750



[View online »](#)

Background: This gene encodes tissue-type plasminogen activator, a secreted serine protease which converts the proenzyme plasminogen to plasmin, a fibrinolytic enzyme. Tissue-type plasminogen activator is synthesized as a single chain which is cleaved by plasmin to a two chain disulfide linked protein. This enzyme plays a role in cell migration and tissue remodeling. Increased enzymatic activity causes hyperfibrinolysis, which manifests as excessive bleeding; decreased activity leads to hypofibrinolysis which can result in thrombosis or embolism. Alternative splicing of this gene results in multiple transcript variants encoding different isoforms.

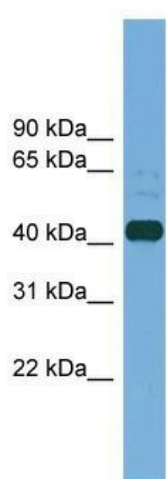
Synonyms: T-PA; TPA

Note: Immunogen Sequence Homology: Pig: 100%; Rat: 100%; Human: 100%; Bovine: 100%; Dog: 93%; Horse: 93%; Mouse: 93%; Guinea pig: 86%; Rabbit: 82%

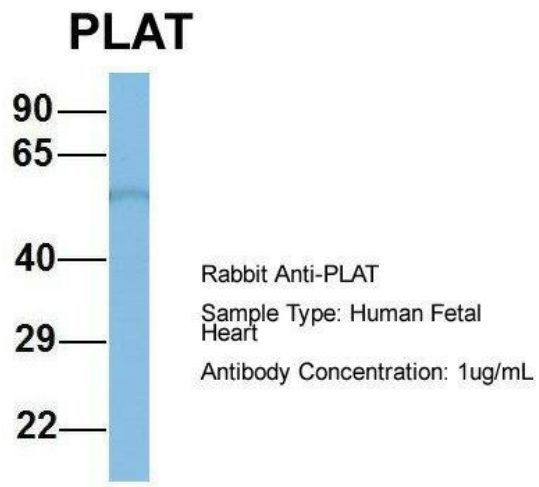
Protein Families: Druggable Genome, Protease, Secreted Protein

Protein Pathways: Complement and coagulation cascades

Product images:



WB Suggested Anti-PLAT Antibody Titration: 0.2-1 ug/ml; ELISA Titer: 1:312500; Positive Control: PANC1 cell lysate



Host: Rabbit; Target Name: PLAT; Sample Tissue: Human Fetal Heart; Antibody Dilution: 1.0 ug/ml