

Product datasheet for **TA344647**

BBS4 Rabbit Polyclonal Antibody

Product data:

Product Type:	Primary Antibodies
Applications:	WB
Recommended Dilution:	WB
Reactivity:	Human
Host:	Rabbit
Isotype:	IgG
Clonality:	Polyclonal
Immunogen:	The immunogen for anti-BBS4 antibody: synthetic peptide directed towards the N terminal of human BBS4. Synthetic peptide located within the following region: YVQALIFRLEGNIQESLELFQTCAVLSPQSADNLKQVARSLFLLGKHKAA
Formulation:	Liquid. Purified antibody supplied in 1x PBS buffer with 0.09% (w/v) sodium azide and 2% sucrose. <i>Note that this product is shipped as lyophilized powder to China customers.</i>
Purification:	Affinity Purified
Conjugation:	Unconjugated
Storage:	Store at -20°C as received.
Stability:	Stable for 12 months from date of receipt.
Predicted Protein Size:	58 kDa
Gene Name:	Bardet-Biedl syndrome 4
Database Link:	NP_149017 Entrez Gene 585 Human Q96RK4



[View online »](#)

Background:

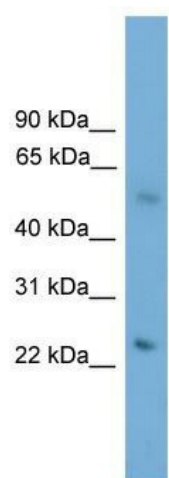
This gene is a member of the Bardet-Biedl syndrome (BBS) gene family. Bardet-Biedl syndrome is an autosomal recessive disorder characterized by severe pigmentary retinopathy, obesity, polydactyly, renal malformation and mental retardation. The proteins encoded by BBS gene family members are structurally diverse. The similar phenotypes exhibited by mutations in BBS gene family members are likely due to the protein's shared roles in cilia formation and function. Many BBS proteins localize to the basal bodies, ciliary axonemes, and pericentriolar regions of cells. BBS proteins may also be involved in intracellular trafficking via microtubule-related transport. The protein encoded by this gene has sequence similarity to O-linked N-acetylglucosamine (O-GlcNAc) transferases in plants and archaeobacteria and in human forms a multi-protein 'BBSome' complex with six other BBS proteins. Alternative splice variants have been described but their predicted protein products have not been experimentally verified.

Synonyms:

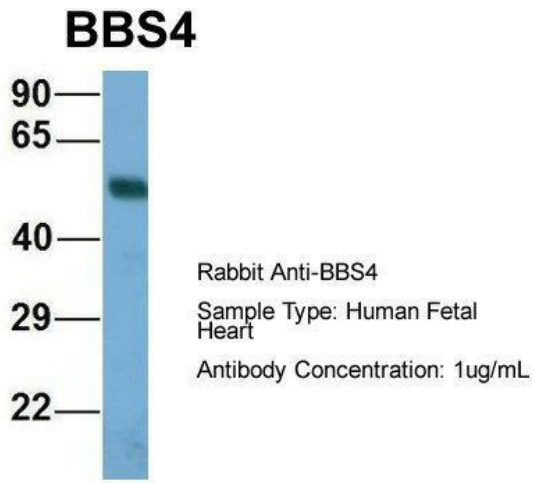
Bardet-Biedl syndrome 4

Note:

Immunogen Sequence Homology: Dog: 100%; Pig: 100%; Rat: 100%; Horse: 100%; Human: 100%; Mouse: 100%; Bovine: 93%; Rabbit: 93%; Zebrafish: 93%; Guinea pig: 93%

Product images:

WB Suggested Anti-BBS4 Antibody Titration: 0.2-1 ug/ml; ELISA Titer: 1:312500; Positive Control: HepG2 cell lysate



Host: Rabbit; Target Name: BBS4; Sample Tissue: Human Fetal Heart; Antibody Dilution: 1.0 ug/ml