

Product datasheet for **TA344644**

Mitofusin 1 (MFN1) Rabbit Polyclonal Antibody

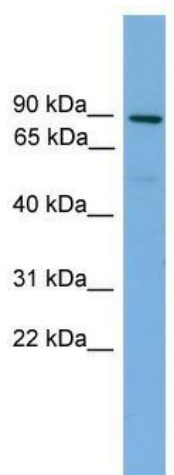
Product data:

Product Type:	Primary Antibodies
Applications:	WB
Recommended Dilution:	WB
Reactivity:	Human, Mouse
Host:	Rabbit
Isotype:	IgG
Clonality:	Polyclonal
Immunogen:	The immunogen for anti-MFN1 antibody: synthetic peptide directed towards the middle region of human MFN1. Synthetic peptide located within the following region: QVDITQKQLEEEIARLPKEIDQLEKIQNNKLLRNKAVQLENELENFTKQ
Formulation:	Liquid. Purified antibody supplied in 1x PBS buffer with 0.09% (w/v) sodium azide and 2% sucrose. <i>Note that this product is shipped as lyophilized powder to China customers.</i>
Purification:	Affinity Purified
Conjugation:	Unconjugated
Storage:	Store at -20°C as received.
Stability:	Stable for 12 months from date of receipt.
Predicted Protein Size:	84
Gene Name:	mitofusin 1
Database Link:	NP_284941 Entrez Gene 67414 Mouse Entrez Gene 55669 Human Q8IWA4
Background:	The protein encoded by this gene is a mediator of mitochondrial fusion. This protein and mitofusin 2 are homologs of the Drosophila protein fuzzy onion (Fzo). They are mitochondrial membrane proteins that interact with each other to facilitate mitochondrial targeting.
Synonyms:	hfzo1; hfzo2
Note:	Immunogen Sequence Homology: Dog: 100%; Rat: 100%; Human: 100%; Mouse: 100%; Bovine: 100%; Rabbit: 100%; Pig: 93%; Horse: 86%



[View online »](#)

Product images:



WB Suggested Anti-MFN1 Antibody Titration: 0.2-1 ug/ml; Positive Control: Human Placenta