

Product datasheet for **TA344642**

MRPS33 Rabbit Polyclonal Antibody

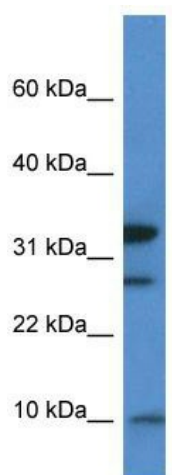
Product data:

Product Type:	Primary Antibodies
Applications:	WB
Recommended Dilution:	WB
Reactivity:	Mouse
Host:	Rabbit
Isotype:	IgG
Clonality:	Polyclonal
Immunogen:	The immunogen for anti-Mrps33 antibody: synthetic peptide corresponding to a region of Mouse. Synthetic peptide located within the following region: DWYPNHNTYFALMGNLRFLGLYRDEHQDFKDEQRRLKLRGKGKPRKGEG
Formulation:	Liquid. Purified antibody supplied in 1x PBS buffer with 0.09% (w/v) sodium azide and 2% sucrose.
Purification:	Affinity Purified
Conjugation:	Unconjugated
Storage:	Store at -20°C as received.
Stability:	Stable for 12 months from date of receipt.
Predicted Protein Size:	12 kDa
Gene Name:	mitochondrial ribosomal protein S33
Database Link:	NP_057155 Entrez Gene 14548 Mouse Q9Y291
Background:	The function of this protein remains unknown.
Synonyms:	CGI-139; MRP-S33; PTD003; S33mt
Note:	Immunogen Sequence Homology: Dog: 100%; Pig: 100%; Rat: 100%; Horse: 100%; Human: 100%; Mouse: 100%; Guinea pig: 100%; Rabbit: 92%; Bovine: 83%



[View online »](#)

Product images:



WB Suggested Anti-Mrps33 Antibody; Titration:
1.0 ug/ml; Positive Control: Mouse Thymus