

## Product datasheet for **TA344641**

### Myosin (MYL6) Rabbit Polyclonal Antibody

#### Product data:

Product Type:	Primary Antibodies
Applications:	IHC, WB
Recommended Dilution:	WB, IHC
Reactivity:	Human
Host:	Rabbit
Isotype:	IgG
Clonality:	Polyclonal
Immunogen:	The immunogen for anti-MYL6 antibody: synthetic peptide directed towards the middle region of human MYL6. Synthetic peptide located within the following region: PMLQTVAKNKDQGTYEDYVEGLRVFDKEGNGTVMGAEIRHVLVTLGEKMT
Formulation:	Liquid. Purified antibody supplied in 1x PBS buffer with 0.09% (w/v) sodium azide and 2% sucrose. <i>Note that this product is shipped as lyophilized powder to China customers.</i>
Purification:	Affinity Purified
Conjugation:	Unconjugated
Storage:	Store at -20°C as received.
Stability:	Stable for 12 months from date of receipt.
Predicted Protein Size:	17 kDa
Gene Name:	myosin light chain 6
Database Link:	<a href="#">NP_524147</a> <a href="#">Entrez Gene 4637 Human</a> <a href="#">P60660</a>



[View online »](#)

**Background:** MYL6 contains 3 EF-hand domains. It is the regulatory light chain of myosin. MYL6 does not bind calcium. Myosin is a hexameric ATPase cellular motor protein. It is composed of two heavy chains, two nonphosphorylatable alkali light chains, and two phosphorylatable regulatory light chains. This gene encodes a myosin alkali light chain that is expressed in smooth muscle and non-muscle tissues. Genomic sequences representing several pseudogenes have been described and two transcript variants encoding different isoforms have been identified for this gene.

**Synonyms:** ESMLC; LC17; LC17-GI; LC17-NM; LC17A; LC17B; MLC-3; MLC1SM; MLC3NM; MLC3SM

**Note:** Immunogen Sequence Homology: Pig: 100%; Rat: 100%; Horse: 100%; Human: 100%; Mouse: 100%; Sheep: 100%; Bovine: 100%; Rabbit: 100%; Guinea pig: 100%; Dog: 92%; Zebrafish: 86%

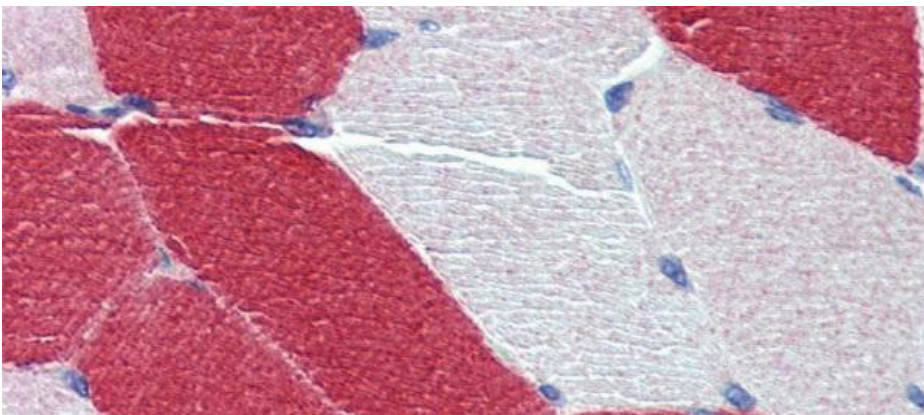
**Protein Families:** Druggable Genome

**Protein Pathways:** Vascular smooth muscle contraction

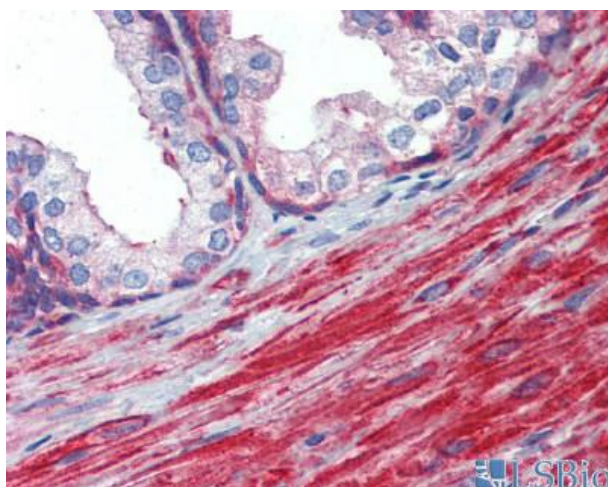
**Product images:**



WB Suggested Anti-MYL6 Antibody Titration: 1 ug/ml; Positive Control: HepG2 cell lysate MYL6 is supported by BioGPS gene expression data to be expressed in HepG2



Immunohistochemistry with Human Skeletal Muscle lysate tissue at an antibody concentration of 5.0 ug/ml using anti-MYL6 antibody



Human Prostate