

## Product datasheet for **TA344640**

### VPS16 Rabbit Polyclonal Antibody

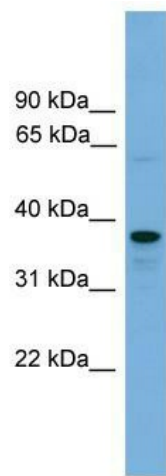
#### Product data:

Product Type:	Primary Antibodies
Applications:	WB
Recommended Dilution:	WB
Reactivity:	Human
Host:	Rabbit
Isotype:	IgG
Clonality:	Polyclonal
Immunogen:	The immunogen for anti-VPS16 antibody: synthetic peptide directed towards the N terminal of human VPS16. Synthetic peptide located within the following region: RGDFFM <del>T</del> LRNQP <del>M</del> ALS <del>L</del> YRQFCKHQELET <del>L</del> KDLYNQDDNHQELGSFH <del>I</del> R <del>A</del>
Formulation:	Liquid. Purified antibody supplied in 1x PBS buffer with 0.09% (w/v) sodium azide and 2% sucrose. <i>Note that this product is shipped as lyophilized powder to China customers.</i>
Purification:	Affinity Purified
Conjugation:	Unconjugated
Storage:	Store at -20°C as received.
Stability:	Stable for 12 months from date of receipt.
Predicted Protein Size:	37 kDa
Gene Name:	VPS16, CORVET/HOPS core subunit
Database Link:	<a href="#">NP_536339</a> <a href="#">Entrez Gene 64601 Human</a> <a href="#">Q9H269</a>



[View online »](#)

- Background:** Vesicle mediated protein sorting plays an important role in segregation of intracellular molecules into distinct organelles. Genetic studies in yeast have identified more than 40 vacuolar protein sorting (VPS) genes involved in vesicle transport to vacuoles. This gene encodes the human homolog of yeast class C Vps16 protein. The mammalian class C Vps proteins are predominantly associated with late endosomes/lysosomes, and like their yeast counterparts, may mediate vesicle trafficking steps in the endosome/lysosome pathway. Two transcript variants encoding different isoforms have been found for this gene.
- Synonyms:** CG8454; CG8454 gene product from transcript CG8454-RA; CG8454-PA; DmelCG8454; dVps16A; hVPS16; VPS16; Vps16A-PA
- Note:** Immunogen Sequence Homology: Dog: 100%; Pig: 100%; Rat: 100%; Horse: 100%; Human: 100%; Mouse: 100%; Bovine: 100%; Rabbit: 100%; Guinea pig: 100%; Zebrafish: 79%
- Protein Families:** Druggable Genome

**Product images:**

WB Suggested Anti-VPS16 Antibody Titration: 0.2-1 ug/ml; Positive Control: MCF7 cell lysate