

## Product datasheet for **TA344638**

### **RAD1 Rabbit Polyclonal Antibody**

#### **Product data:**

Product Type:	Primary Antibodies
Applications:	WB
Recommended Dilution:	WB
Reactivity:	Human
Host:	Rabbit
Isotype:	IgG
Clonality:	Polyclonal
Immunogen:	The immunogen for anti-RAD1 antibody: synthetic peptide directed towards the middle region of human RAD1. Synthetic peptide located within the following region: ITMSPDKPYFRLSTFGNAGSSHLDYPKDSLMEAFHCNQTVNRYKISLL
Formulation:	Liquid. Purified antibody supplied in 1x PBS buffer with 0.09% (w/v) sodium azide and 2% sucrose. <i>Note that this product is shipped as lyophilized powder to China customers.</i>
Purification:	Affinity Purified
Conjugation:	Unconjugated
Storage:	Store at -20°C as received.
Stability:	Stable for 12 months from date of receipt.
Predicted Protein Size:	32 kDa
Gene Name:	RAD1 checkpoint DNA exonuclease
Database Link:	<a href="#">NP_002844</a> <a href="#">Entrez Gene 5810 Human</a> <a href="#">O60671</a>
Background:	This gene encodes a component of a heterotrimeric cell cycle checkpoint complex, known as the 9-1-1 complex, that is activated to stop cell cycle progression in response to DNA damage or incomplete DNA replication. The 9-1-1 complex is recruited by RAD17 to affected sites where it may attract specialized DNA polymerases and other DNA repair effectors. Alternatively spliced transcript variants of this gene have been described.
Synonyms:	HRAD1; REC1

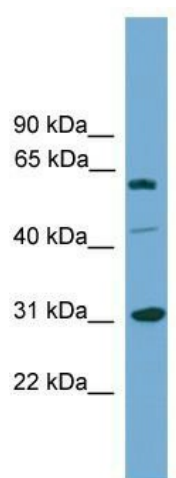


[View online »](#)

**Note:** Immunogen Sequence Homology: Dog: 100%; Pig: 100%; Rat: 100%; Horse: 100%; Human: 100%; Bovine: 100%; Rabbit: 100%; Guinea pig: 100%; Mouse: 93%

**Protein Families:** Druggable Genome

**Product images:**



WB Suggested Anti-RAD1 Antibody Titration: 0.2-1 ug/ml; ELISA Titer: 1:1562500; Positive Control: COLO205 cell lysate RAD1 is strongly supported by BioGPS gene expression data to be expressed in Human COLO205 cells