

## Product datasheet for **TA344637**

### Rad51L1 (RAD51B) Rabbit Polyclonal Antibody

#### Product data:

Product Type:	Primary Antibodies
Applications:	WB
Recommended Dilution:	WB
Reactivity:	Human
Host:	Rabbit
Isotype:	IgG
Clonality:	Polyclonal
Immunogen:	The immunogen for anti-RAD51L1 antibody: synthetic peptide directed towards the middle region of human RAD51L1. Synthetic peptide located within the following region: TESAFSAERLVEIAESRFPYFNTEEKLLLTSSKVHLYRELTCDLQRI
Formulation:	Liquid. Purified antibody supplied in 1x PBS buffer with 0.09% (w/v) sodium azide and 2% sucrose. <i>Note that this product is shipped as lyophilized powder to China customers.</i>
Purification:	Affinity Purified
Conjugation:	Unconjugated
Storage:	Store at -20°C as received.
Stability:	Stable for 12 months from date of receipt.
Predicted Protein Size:	38 kDa
Gene Name:	RAD51 paralog B
Database Link:	<a href="#">NP_598194</a> <a href="#">Entrez Gene 5890 Human</a> <a href="#">O15315</a>



[View online »](#)

**Background:**

The protein encoded by this gene is a member of the RAD51 protein family. RAD51 family members are evolutionarily conserved proteins essential for DNA repair by homologous recombination. This protein has been shown to form a stable heterodimer with the family member RAD51C, which further interacts with the other family members, such as RAD51, XRCC2, and XRCC3. Overexpression of this gene was found to cause cell cycle G1 delay and cell apoptosis, which suggested a role of this protein in sensing DNA damage. At least three alternatively spliced transcript variants encoding distinct isoforms have been observed.

**Synonyms:**

R51H2; RAD51L1; REC2

**Note:**

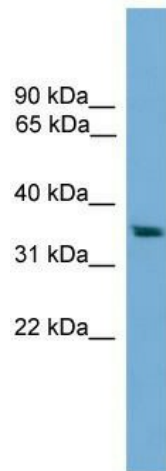
Immunogen Sequence Homology: Dog: 100%; Pig: 100%; Human: 100%; Rabbit: 100%; Guinea pig: 100%; Rat: 93%; Mouse: 93%; Bovine: 93%; Horse: 79%

**Protein Families:**

Druggable Genome

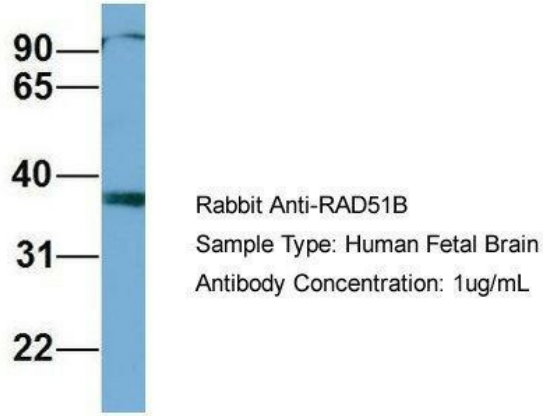
**Protein Pathways:**

Homologous recombination

**Product images:**

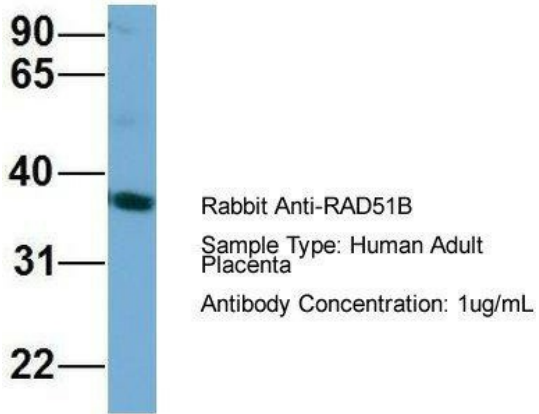
WB Suggested Anti-RAD51L1 Antibody Titration:  
0.2-1 ug/ml; ELISA Titer: 1:1562500; Positive  
Control: HepG2 cell lysate

## RAD51B



Host: Rabbit; Target Name: RAD51B; Sample Tissue: Human Fetal Brain; Antibody Dilution: 1.0 µg/ml

## RAD51B



Host: Rabbit; Target Name: RAD51B; Sample Tissue: Human Adult Placenta; Antibody Dilution: 1.0 µg/ml