

## Product datasheet for **TA344635**

### ATP6V1G2 Rabbit Polyclonal Antibody

#### Product data:

Product Type:	Primary Antibodies
Applications:	WB
Recommended Dilution:	WB
Reactivity:	Human
Host:	Rabbit
Isotype:	IgG
Clonality:	Polyclonal
Immunogen:	The immunogen for anti-ATP6V1G2 antibody: synthetic peptide directed towards the middle region of human ATP6V1G2. Synthetic peptide located within the following region: NLSAEVEQATRRQVQGMQSSQQRNRERVLAQLLGMVCDVRPQVHPNYRIS
Formulation:	Liquid. Purified antibody supplied in 1x PBS buffer with 0.09% (w/v) sodium azide and 2% sucrose. <i>Note that this product is shipped as lyophilized powder to China customers.</i>
Purification:	Affinity Purified
Conjugation:	Unconjugated
Storage:	Store at -20°C as received.
Stability:	Stable for 12 months from date of receipt.
Predicted Protein Size:	13 kDa
Gene Name:	ATPase H <sup>+</sup> transporting V1 subunit G2
Database Link:	<a href="#">NP_569730</a> <a href="#">Entrez Gene 534 Human</a> <a href="#">O95670</a>



[View online »](#)

**Background:**

This gene encodes a component of vacuolar ATPase (V-ATPase), a multisubunit enzyme that mediates acidification of intracellular compartments of eukaryotic cells. V-ATPase dependent acidification is necessary for such intracellular processes as protein sorting, zymogen activation, receptor-mediated endocytosis, and synaptic vesicle proton gradient generation. V-ATPase is composed of a cytosolic V1 domain and a transmembrane V0 domain. The V1 domain consists of three A and three B subunits, two G subunits plus the C, D, E, F, and H subunits. The V1 domain contains the ATP catalytic site. The V0 domain consists of five different subunits: a, c, c', c'', and d. Additional isoforms of many of the V1 and V0 subunit proteins are encoded by multiple genes or alternatively spliced transcript variants. This encoded protein is one of three V1 domain G subunit proteins. This gene had previous gene symbols of ATP6G and ATP6G2. Alternatively spliced transcript variants encoding different isoforms have been described.

**Synonyms:**

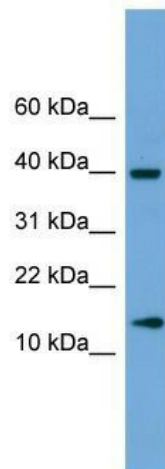
ATP6G; ATP6G2; NG38; VMA10

**Note:**

Immunogen Sequence Homology: Dog: 100%; Rat: 100%; Human: 100%; Pig: 93%; Mouse: 93%; Sheep: 93%; Bovine: 93%; Rabbit: 93%; Horse: 86%; Guinea pig: 86%

**Protein Pathways:**

Epithelial cell signaling in Helicobacter pylori infection, Metabolic pathways, Oxidative phosphorylation, Vibrio cholerae infection

**Product images:**

WB Suggested Anti-ATP6V1G2 Antibody Titration: 0.2-1 ug/ml; Positive Control: Human brain