

Product datasheet for **TA344634**

IL17D Rabbit Polyclonal Antibody

Product data:

Product Type:	Primary Antibodies
Applications:	WB
Recommended Dilution:	WB
Reactivity:	Human
Host:	Rabbit
Isotype:	IgG
Clonality:	Polyclonal
Immunogen:	The immunogen for anti-IL17D antibody: synthetic peptide directed towards the N terminal of human IL17D. Synthetic peptide located within the following region: MLVAGFLLALPPSWAAGAPRAGRRPARPRGCADRPEELLEQLYGRLAAGV
Formulation:	Liquid. Purified antibody supplied in 1x PBS buffer with 0.09% (w/v) sodium azide and 2% sucrose. <i>Note that this product is shipped as lyophilized powder to China customers.</i>
Purification:	Affinity Purified
Conjugation:	Unconjugated
Storage:	Store at -20°C as received.
Stability:	Stable for 12 months from date of receipt.
Predicted Protein Size:	21 kDa
Gene Name:	interleukin 17D
Database Link:	NP_612141 Entrez Gene 53342 Human Q8TAD2
Background:	The protein encoded by this gene is a cytokine that shares the sequence similarity with IL17. The treatment of endothelial cells with this cytokine has been shown to stimulate the production of other cytokines including IL6, IL8 and CSF2/ GM-CSF. The increased expression of IL8 induced by this cytokine was found to be NF-kappa B-dependent.
Synonyms:	IL-17D

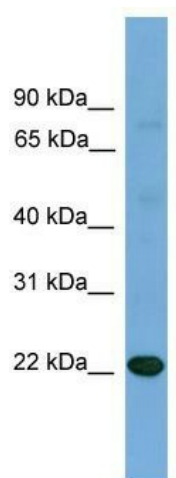


[View online »](#)

Note: Immunogen Sequence Homology: Pig: 100%; Human: 100%; Mouse: 100%; Bovine: 100%; Guinea pig: 100%

Protein Families: Druggable Genome, Secreted Protein

Product images:



WB Suggested Anti-IL17D Antibody Titration: 0.2-1 ug/ml; ELISA Titer: 1:312500; Positive Control: Human Placenta